



Crumlin Neighbourhood Profile

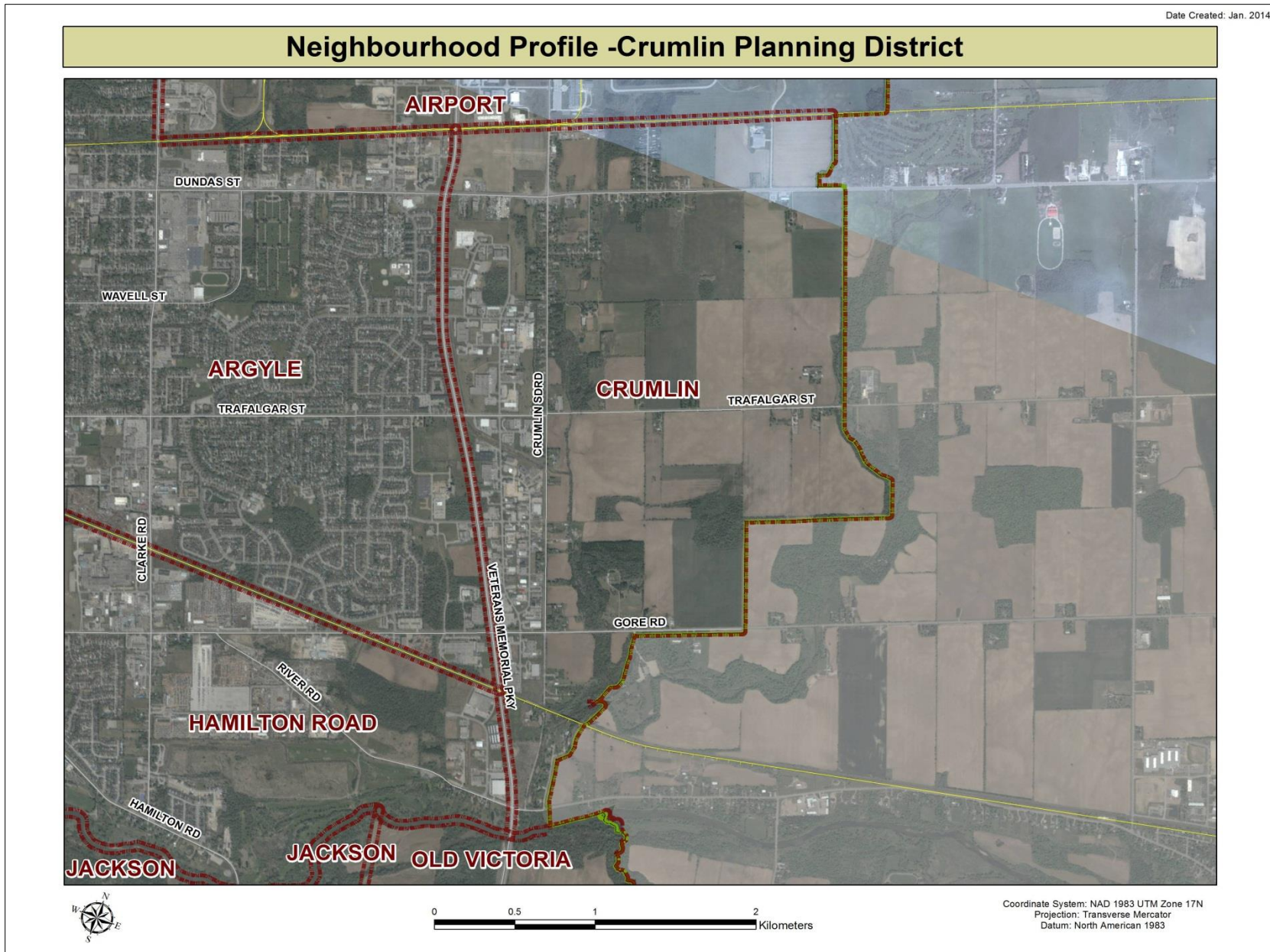
For further information contact:

John-Paul Sousa

Planning Research Analyst

Direct: (519) 661-2500 ext. 5989 | email: jpsousa@london.ca

Date Created: Jan. 2014

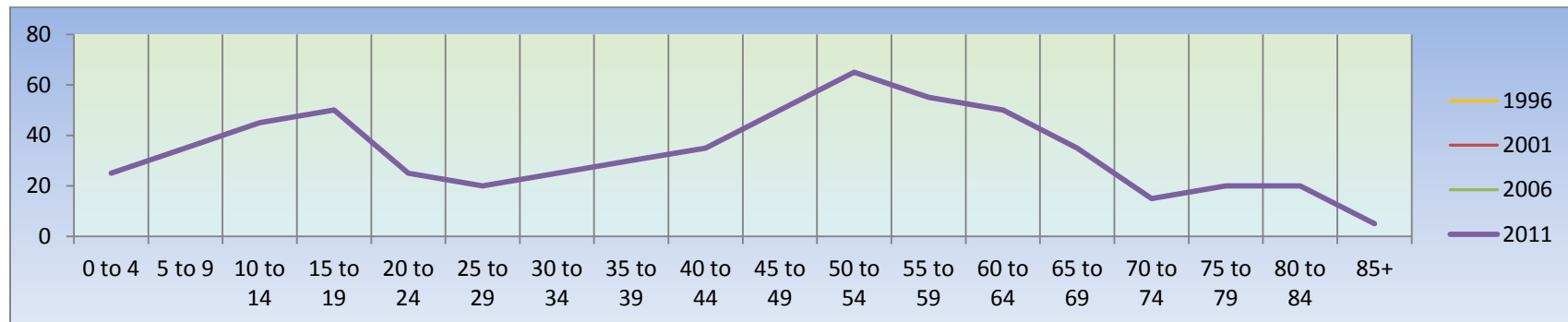


Population Characteristics & Age Distribution

Crumlin Neighbourhood	1996	2001	2006	2011	Change From Previous Period	
Total Population	400	610	450	605	↑	34%
Female	185	270	205	290	↑	41%
Male	215	340	245	315	↑	29%

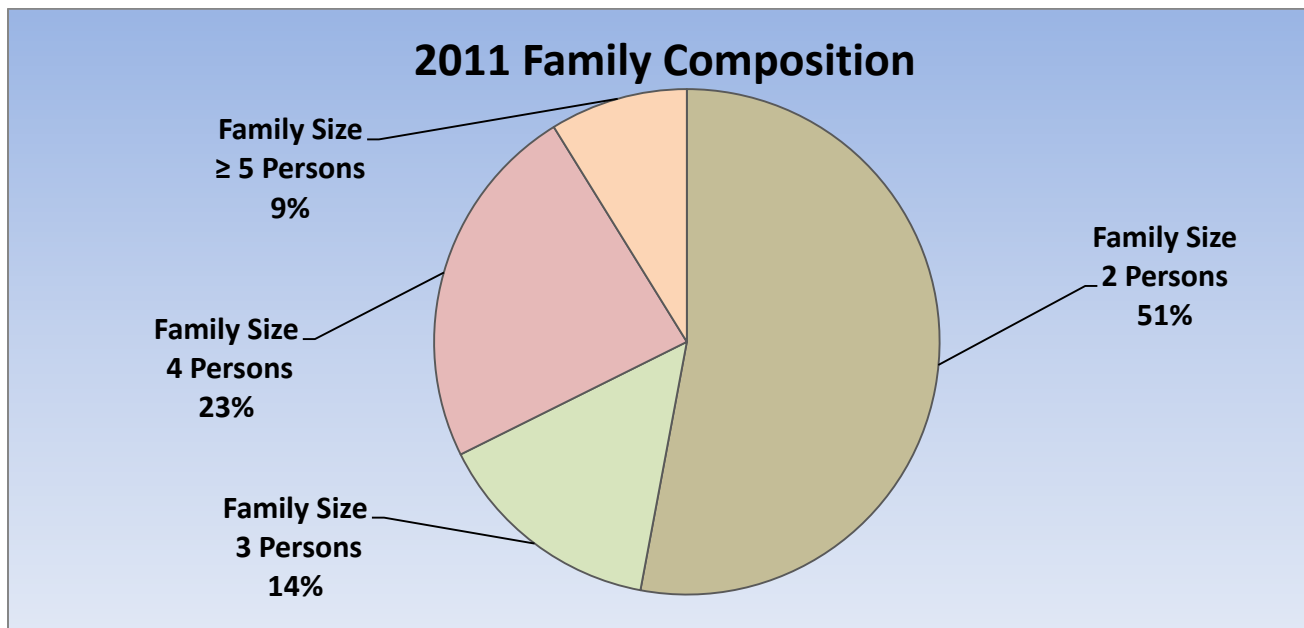
Age Structure	1996	2001	2006	2011	Change From Previous Period		As a % of Neighbourhood
0-19	125	195	115	150	↑	30%	25%
0 to 4	N.A.	N.A.	N.A.	25			4%
5 to 9	N.A.	N.A.	N.A.	35			6%
10 to 14	N.A.	N.A.	N.A.	40			7%
15 to 19	N.A.	N.A.	N.A.	50			8%
20-44	150	180	125	145	↑	16%	24%
45-64	90	145	145	220	↑	52%	36%
65+	25	90	75	100	↑	33%	17%
Median Age	N.A.	N.A.	N.A.	45.9			

2011 Census Age Cohort Breakout	Male	Female	Total	As a % of Neighbourhood
0 to 4	10	15	25	4.13%
5 to 9	20	15	35	5.79%
10 to 14	30	15	45	7.44%
15 to 19	25	25	50	8.26%
20 to 24	20	5	25	4.13%
25 to 29	5	15	20	3.31%
30 to 34	15	10	25	4.13%
35 to 39	20	10	30	4.96%
40 to 44	15	20	35	5.79%
45 to 49	30	20	50	8.26%
50 to 54	30	35	65	10.74%
55 to 59	30	25	55	9.09%
60 to 64	25	25	50	8.26%
65 to 69	20	15	35	5.79%
70 to 74	5	10	15	2.48%
75 to 79	10	10	20	3.31%
80 to 84	10	10	20	3.31%
85+	0	5	5	<1%
Total	320	285	605	



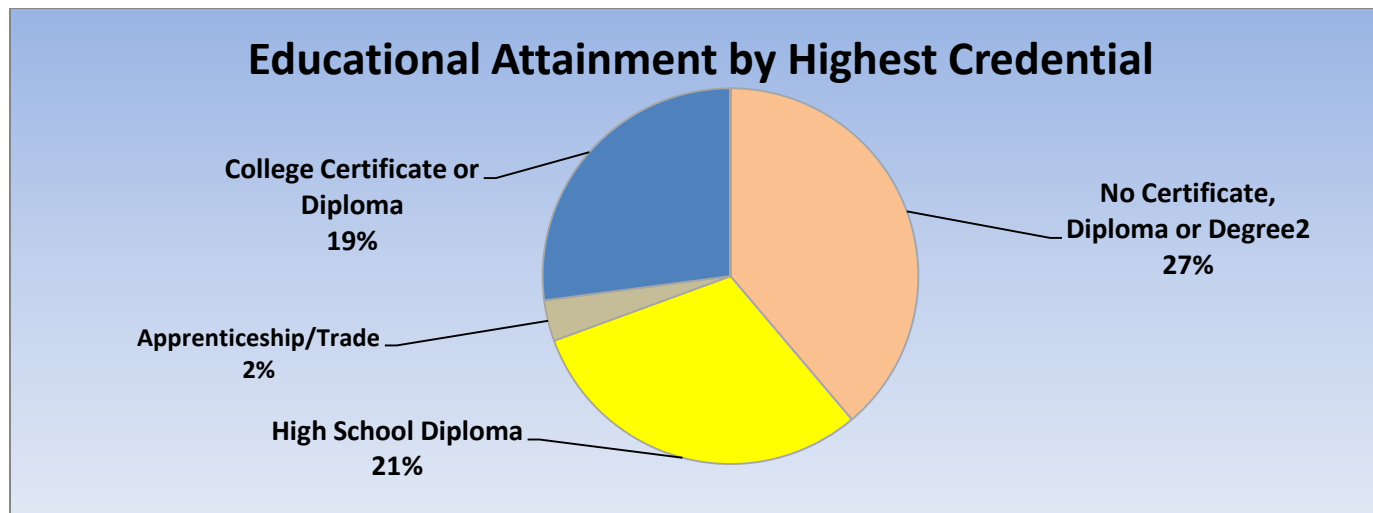
Marital Status	1996	2001	2006	2011	Change From Previous Period	As a % of Neighbourhood
Single	75	120	90	130	↑	21%
Married	185	320	235	190	↓	31%
Common-Law	20	10	25	50	↑	8%
Divorced	25	15	25	25	–	4%
Separated	15	15	0	15	↑	2%
Widowed	10	0	10	25	↑	4%
Citizenship, Immigration & Ethnic Identity	1996	2001	2006	2011	Change From Previous Period	As a % of Neighbourhood
Citizenship						
Canadian Citizens	380	590	440	530	↑	100%
Non-Canadian Citizens	25	15	10	0	↓	0%
Immigration Status						
Canadian Born Population	335	475	405	465	↑	77%
Foreign Born Population	75	135	50	65	↑	11%
Visible Minority Population	0	0	10	10	–	2%
Aboriginal Identity Population	0	0	0	0	–	0%

Family Composition	1996	2001	2006	2011	Change From Previous Period	As a % of Neighbourhood
Number of Census Families	130	185	140	175	↑	
Family Size - 2 Persons	65	80	65	90	↑	51%
Family Size - 3 Persons	20	40	35	25	↓	14%
Family Size - 4 Persons	30	30	20	40	↑	23%
Family Size - ≥ 5 Persons	10	30	20	15	↓	9%
Census Family - Average Size	2.80	3.20	3.00	3.00		



Family Structure & Number of Children	1996	2001	2006	2011	Change From Previous Period
Married Couples	95	160	115	130	↑
Without Children	45	70	65	65	–
With Children	50	90	55	65	↑
Common-Law	10	0	15	30	↑
Without Children	10	0	0	10	↑
With Children	0	0	15	15	–
Lone Parent Families	30	20	15	20	↑
Female Headed	30	10	10	15	↑
1 Child	20	0	0	N.A.	
2 Children	10	10	0	N.A.	
≥ 3 Children	0	0	0	N.A.	
Male Headed	0	10	0	5	↑
1 Child	0	10	0	N.A.	
2 Children	0	0	0	N.A.	
≥ 3 Children	0	0	0	N.A.	

Educational Attainment by Credential	1996	2001	2006	2011	Change From Previous Period	As a % of Neighbourhood
No Certificate, Diploma or Degree	N.A.	N.A.	70	165	↑	27%
High School Diploma or Equivalent	N.A.	N.A.	85	130	↑	21%
Apprenticeship, or Trade Certificate	N.A.	N.A.	40	15	↓	2%
College Certificate or Diploma	N.A.	N.A.	80	115	↑	19%
University Certificate or Diploma	N.A.	N.A.	80	0	↓	0%
University -Bachelor's Degree	N.A.	N.A.	0	0	—	0%
University Degree above bachelor level (M.A. or PhD)	N.A.	N.A.	0	0	—	0%

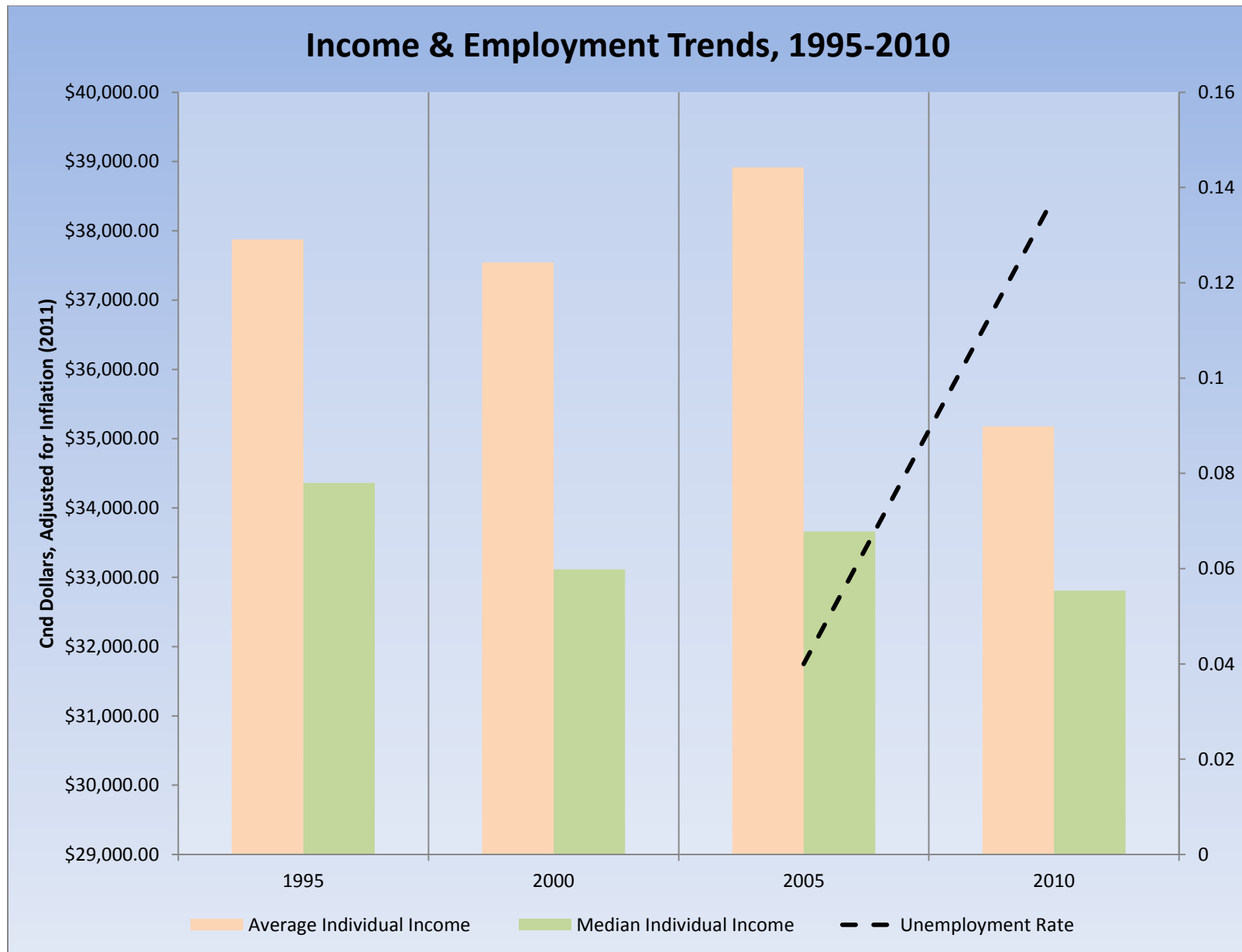


Housing by Structure Type & Tenure	1996	2001	2006	2011	Change From Previous Period	As a % of Neighbourhood
Total Occupied Dwellings	145	195	160	225	↑	
Single-Detached	130	200	150	205	↑	93%
Semi-Detached	0	0	0	5	↑	2%
Row House	0	0	0	0	–	0%
Duplex	20	0	0	10	↑	5%
Apartment < 5 Storeys	0	0	0	0	–	0%
Apartment ≥ 5 Storeys	0	0	0	0	–	
Number of Owned Dwellings	120	180	150	145	↓	
Owned as a % of Total	86%	90%	91%	63%	↓	
Number of Rented Dwellings	20	20	15	85	↑	
Rented as a % of Total	14%	10%	9%	37%	↑	
Average # of Rooms	7.60	7.60	7.50	6.8	↓	
Average # of Bedrooms	3	3.20	3.10	N.A.	–	
Average Gross Rent	\$913.00	N.A.	N.A.	\$963.00	–	
Average Value of Dwelling	\$205,621.00	\$166,971.00	\$237,504.00	\$276,539.00	↑	

Labour Market Indicators	1996	2001	2006	2011	Change From Previous Period	As a % of Neighbourhood
Total Labour Force ≥ 15 years	205	415	245	290	↑	
Female	85	215	115	150	↑	52%
Male	120	200	130	135	↑	47%
Unemployment Rate	N.A.	N.A.	4%	13.80%	↑	
Female	N.A.	N.A.	N.A.	N.A.		
Male	N.A.	N.A.	N.A.	N.A.		
Employment Rate	N.A.	N.A.	N.A.	57.30%		
Participation Rate	65%	76%	66%	65.20%	↓	
Female	55%	74%	62%	62.50%	↑	
Male	80%	79%	70%	64.30%	↓	
Labour Force by Sector						
Primary (Agriculture & Resources)	10	25	10	0	↓	0%
Secondary (Construction & Manufacturing)	75	120	65	60	↓	63%
Tertiary Services	100	235	160	35	↓	37%

Income Characteristics of Economically Active Population	1996	2001	2006	2011	Change From Previous Period
Individual Income					
Average Income	\$27,611.00	\$29,867.00	\$34,774.00	\$34,125.00	↓
Median Income	\$25,050.00	\$26,343.00	\$30,079.00	\$31,826.00	↑
Income by Gender					
Average Income – Male	\$33,675.00	\$36,841.00	\$40,062.00	\$46,719.00	↑
Average Income - Female	\$21,547.00	\$22,893.00	\$29,380.00	\$22,932.00	↓
Median Income – Male	\$30,023.00	\$30,949.00	\$38,309.00	\$43,534.00	↑
Median Income - Female	\$20,077.00	\$21,738.00	\$24,890.00	\$12,091.00	↓
Household Income					
Average Household Income	\$53,157.00	\$69,898.00	\$77,025.00	\$65,377.00	↓
Median Household Income	\$48,839.00	\$68,925.00	\$72,112.00	\$59,627.00	↓
Family Income					
Average Family Income	\$48,609.00	\$69,895.00	\$82,614.00	\$83,156.00	↑
Median Family Income	\$46,299.00	\$66,753.00	\$85,743.00	\$74,494.00	↓
Lone-Parent Families					
Average Family Income	N.A.	N.A.	N.A.	\$76,506.00	
Median Family Income	N.A.	N.A.	N.A.	\$74,506.00	

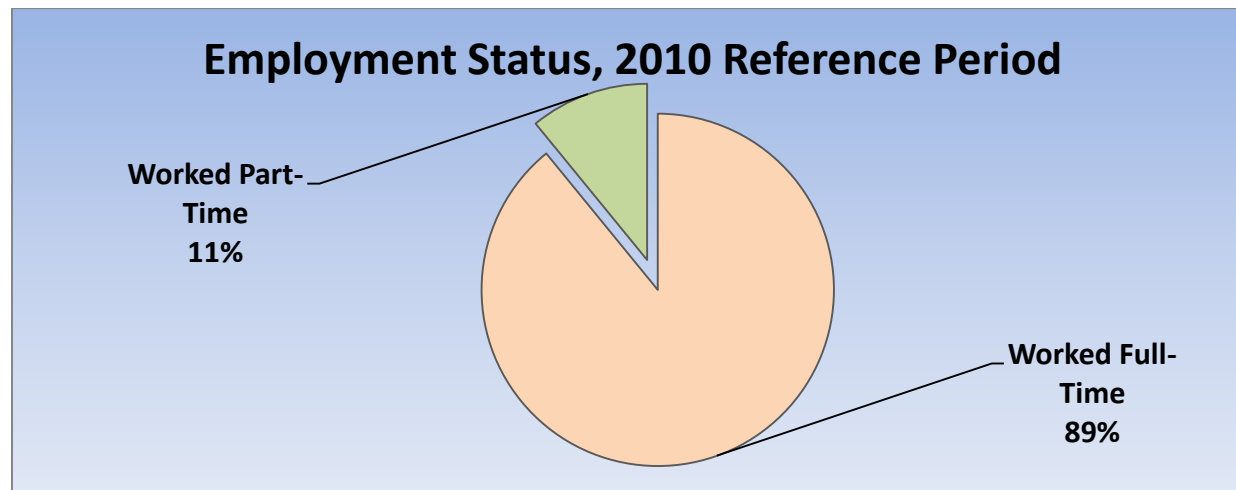
Data Note: Income figures based on previous reporting year (1995, 2000, 2005 & 2010).



Labour Force by National Occupational Classification	1996	2001	2006	2011	Change From Previous Period	As a % of Labour Force
Management	10	20	20	0	↓	0%
Business, Finance and Administration	65	40	35	30	↓	13%
Natural and Applied Science Fields	10	50	20	15	↓	7%
Health Care	10	10	0	0	—	0%
Education, Government, Social & Community Services	20	20	10	0	↓	0%
Art, Culture, recreation and Sport	0	0	0	35	↑	15%
Sales and Service Sector	25	80	55	55	—	24%
Trades, Transport and Equipment Operators	55	60	85	65	↓	28%
Natural Resources and Agriculture	10	30	10	0	↓	0%
Manufacturing and Utilities	10	40	20	30	↑	13%

Class of Worker	1996	2001	2006	2011	Change From Previous Period	As a % Neighbourhood
Employee	155	300	200	240	↑ 20%	83%
Female	35	25	10	95		
Male	20	35	30	145		
Self-Employed	55	60	40	50	↑ 25%	17%
Female	25	30	0	45		
Male	30	30	40	5		

Employment Status	1996	2001	2006	2011	Change From Previous Period	As a % of Active Labour Force
Worked Full-Time in 2010	N.A.	N.A.	N.A.	245	N.A.	89%
Worked Part-Time in 2010	N.A.	N.A.	N.A.	30	N.A.	11%



Mode of Transport to Work	1996	2001	2006	2011	Change From Previous Period	As a % of Neighbourhood
Automobile -As a Driver	125	265	195	220	↑	96%
Car-Pool	10	25	15	10	↓	4%
Public Transportation	15	20	10	0	↓	0%
Walked or Bicycled	0	0	10	0	↓	0%
Other Modes	0	10	0	0	—	0%
Median Commuting Duration	N.A.	N.A.	N.A.	20.1 min.		

Place of Work	1996	2001	2006	2011	Change From Previous Period	As a % of Neighbourhood
Worked at Home	35	50	20	0	↓	0%
Worked at a Fixed Address	120	265	175	235	↑	94%
No Fixed Workplace Address	30	40	40	15	↓	6%
Worked within Municipality	110	215	160	0	↓	
Work in a different Municipality	0	45	20	0	↓	
Worked outside Canada	0	0	0	0	—	

Mobility/Migration Status	1996	2001	2006	2011	Change From Previous Period	As a % of Neighbourhood
Lived at the same address 5 years ago	230	480	305	355	↑	69%
Moved sometime with the last 5 years	160	105	125	160	↑	31%
Internal Migrants	10	20	15	35	↑	100%
- Intra-provincial	10	20	15	35	↑	
- Inter-provincial	0	0	0	0	—	
External Migrants	25	0	15	0	↓	0%
Lived at the same address 1 years ago	365	570	430	500	↑	94%
Moved sometime with the last year	45	35	30	30	↓	6%
Internal Migrants	10	0	0	0	—	
- Intra-provincial	10	0	0	0		
- Inter-provincial	0	0	0	0		
External Migrants	0	0	0	0		

Place of Birth	1996	2001	2006	2011	Change From Previous Period	As a % of Neighbourhood
Total Immigrant Population	N.A.	N.A.	45	65	↑	11%
Place of Birth by Continent						
North America (US only)	N.A.	N.A.	N.A.	N.A.		
Africa	N.A.	N.A.	N.A.	N.A.		
Asia	N.A.	N.A.	N.A.	N.A.		
Caribbean	N.A.	N.A.	N.A.	N.A.		
Central and South America	N.A.	N.A.	N.A.	N.A.		
Europe	N.A.	N.A.	N.A.	N.A.		
Recent Immigration by Continent, 2006-2011						
Recent Immigrants	N.A.	N.A.	10	0	↓	
North America (US only)	N.A.	N.A.	N.A.	N.A.		
Africa	N.A.	N.A.	N.A.	N.A.		
Asia	N.A.	N.A.	N.A.	N.A.		
Caribbean	N.A.	N.A.	N.A.	N.A.		
Central and South America	N.A.	N.A.	N.A.	N.A.		
Europe	N.A.	N.A.	N.A.	N.A.		

Immigration by Place of Birth	1996	2001	2006	2011	Change From Previous Period	As a % of Neighbourhood
1. N.A.	N.A.	N.A.	N.A.	N.A.		

Period of Immigration	1996	2001	2006	2011	Change From Previous Period	As a % of Neighbourhood
Before 1971	N.A.	N.A.	N.A.	35		5%
1971 to 1980	N.A.	N.A.	N.A.	0		
1981 to 1990	N.A.	N.A.	N.A.	0		
1991 to 2000	N.A.	N.A.	N.A.	0		
2001 to 2011	N.A.	N.A.	N.A.	0		

Language	1996	2001	2006	2011	Change From Previous Period	As a % of Neighbourhood
Knowledge of Official Languages						
English Only	400	590	450	570	↑	94%
French Only	0	0	0	0	–	0%
English and French	10	15	0	25	↑	4%
Neither English or French	0	0	0	5	↑	1%
Language Spoken Most Often at Home						
English	380	540	405	290	↓	48%
French	0	0	0	0	–	0%
Non-Official Language	30	35	50	20	↓	3%
Mother Tongue *						
English	365	515	370	490	↑	81%
French	0	0	0	5	↑	1%
Non-Official Language	35	90	85	110	↑	18%

* Statistics Canada defines 'mother tongue' as the first language learned in childhood and still understood by the individual at the time of census reporting.

Non-Official Languages Spoken Top 10 Reported	1996	2001	2006	2011	Change From Previous Period	As a % of Neighbourhood
N.A.	N.A.	N.A.	N.A.	N.A.		

Religious Identification	1996	2001	2006	2011	Change From Previous Period	As a % of Neighbourhood
Buddhist	N.A.	N.A.	N.A.	0		0%
Christian	N.A.	N.A.	N.A.	275		45%
Anglican	N.A.	N.A.	N.A.	25		4%
Baptist	N.A.	N.A.	N.A.	10		2%
Catholic	N.A.	N.A.	N.A.	110		18%
Orthodox	N.A.	N.A.	N.A.	0		0%
Lutheran	N.A.	N.A.	N.A.	0		0%
Pentecostal	N.A.	N.A.	N.A.	0		0%
Presbyterian	N.A.	N.A.	N.A.	15		2%
United Church	N.A.	N.A.	N.A.	55		9%
Other Christian	N.A.	N.A.	N.A.	60		10%
Hindu	N.A.	N.A.	N.A.	0		0%
Jewish	N.A.	N.A.	N.A.	0		0%
Muslim	N.A.	N.A.	N.A.	0		0%
Sikh	N.A.	N.A.	N.A.	0		0%
Aboriginal Spirituality	N.A.	N.A.	N.A.	0		0%

Notes:

- (1) Source Data –Statistics Canada. 1996-2011 Census Data, Customized Profiles. Ottawa, Canada
- (2) Data also derived from Statistics Canada’s National Household Survey (NHS)
- (3) Customized Community and Neighbourhood Profiles tabulated and compiled by the City of London’s Planning Division –Policy Planning and Research Section.