



Fanshawe Neighbourhood Profile

For further information contact:

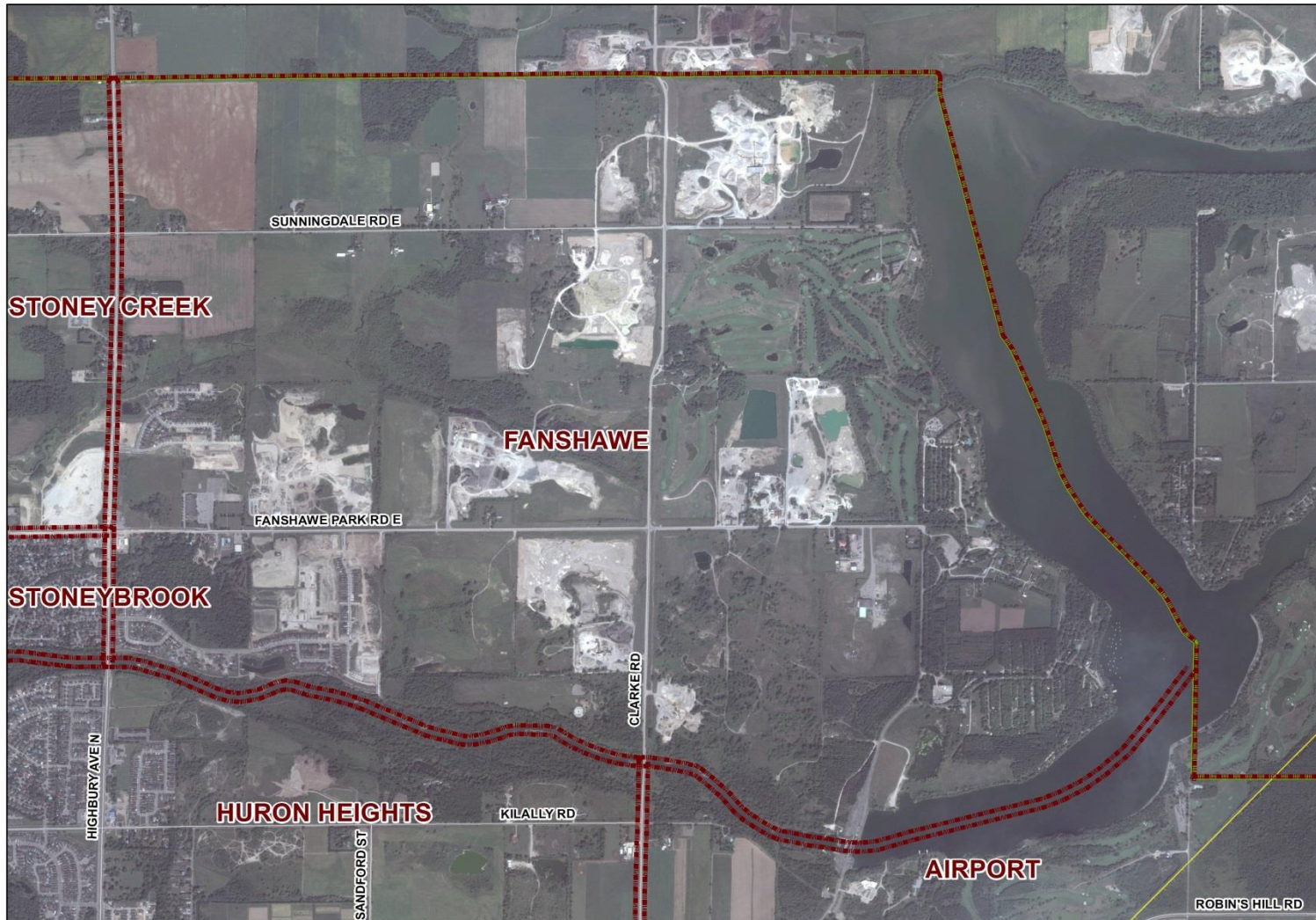
John-Paul Sousa

Planning Research Analyst

Direct: (519) 661-2500 ext. 5989 | email: jpsousa@london.ca

Date Created: Jan. 2014

Neighbourhood Profile -Fanshawe Planning District



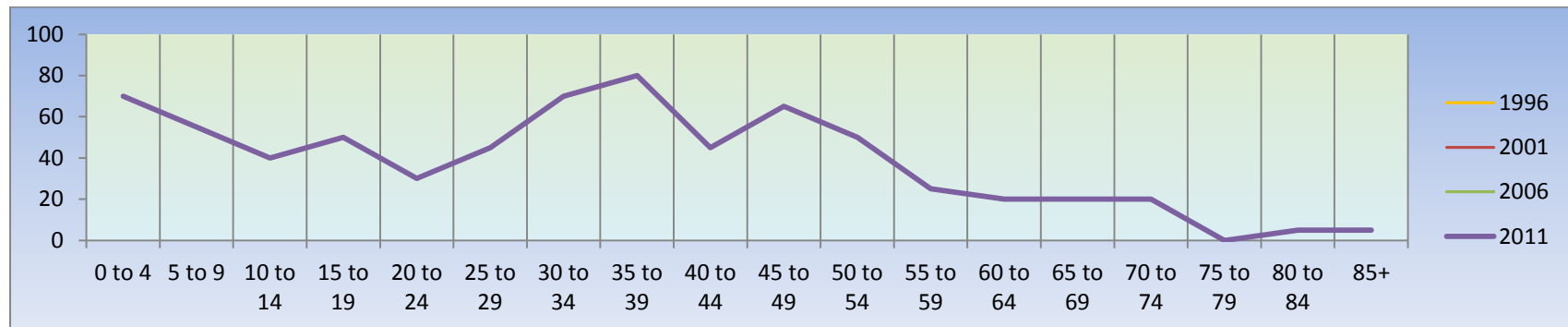
Coordinate System: NAD 1983 UTM Zone 17N
Projection: Transverse Mercator
Datum: North American 1983

Population Characteristics & Age Distribution

Fanshawe Neighbourhood	1996	2001	2006	2011	Change From Previous Period	
Total Population	40	105	170	690	↑	306%
Female	N.A.	N.A.	105	340	↑	224%
Male	N.A.	N.A.	65	350	↑	438%

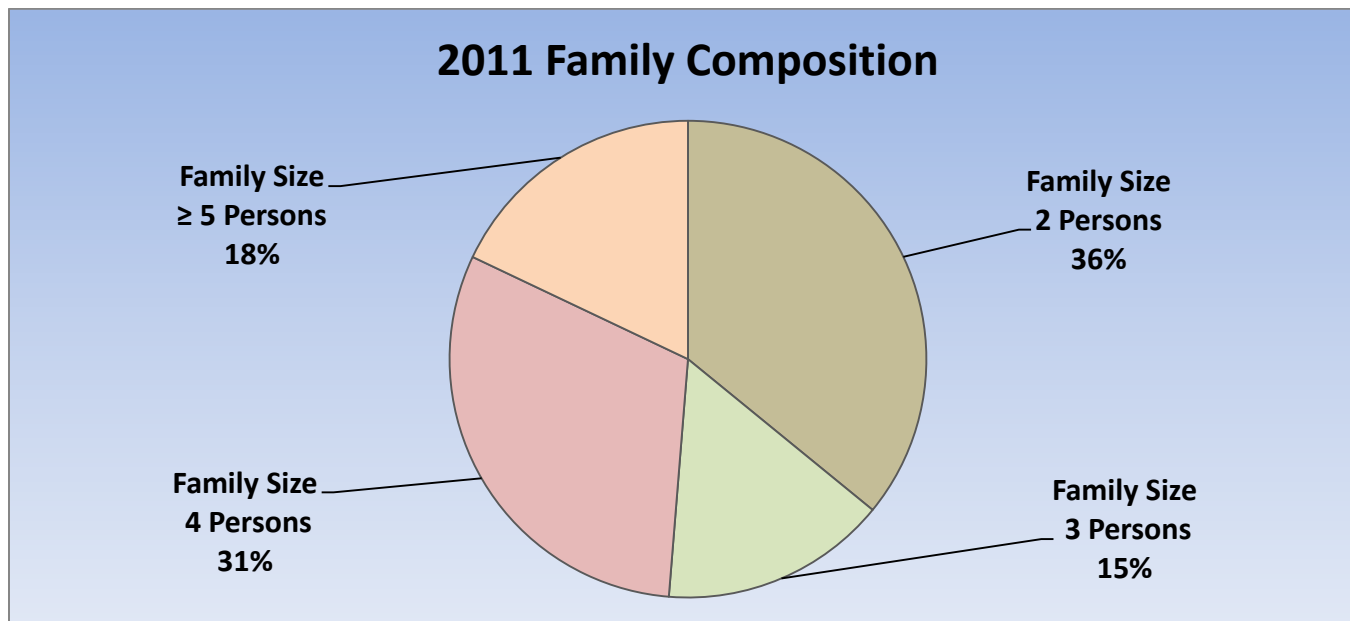
Age Structure	1996	2001	2006	2011	Change From Previous Period		As a % of Neighbourhood
0-19	N.A.	N.A.	30	220	↑	633%	32%
0 to 4	N.A.	N.A.	N.A.	70	↑		10%
5 to 9	N.A.	N.A.	N.A.	60	↑		9%
10 to 14	N.A.	N.A.	N.A.	45	↑		7%
15 to 19	N.A.	N.A.	N.A.	45	↑		7%
20-44	N.A.	N.A.	20	275	↑	1,275%	40%
45-64	N.A.	N.A.	85	150	↑	76%	22%
65+	N.A.	N.A.	10	50	↑	400%	7%
Median Age	N.A.	N.A.	N.A.	33.9			

2011 Census Age Cohort Breakout	Male	Female	Total	As a % of Neighbourhood
0 to 4	35	35	70	10.70%
5 to 9	25	30	55	7.91%
10 to 14	15	25	40	5.76%
15 to 19	35	15	50	7.19%
20 to 24	15	15	30	4.32%
25 to 29	20	25	45	6.47%
30 to 34	35	35	70	10.07%
35 to 39	40	40	80	11.51%
40 to 44	25	20	45	6.47%
45 to 49	35	30	65	9.35%
50 to 54	25	25	50	7.19%
55 to 59	15	10	25	3.60%
60 to 64	5	15	20	2.88%
65 to 69	15	5	20	2.88%
70 to 74	10	10	20	2.88%
75 to 79	0	0	0	0%
80 to 84	0	5	5	<1%
85+	5	0	5	<1%
Total	355	340	695	



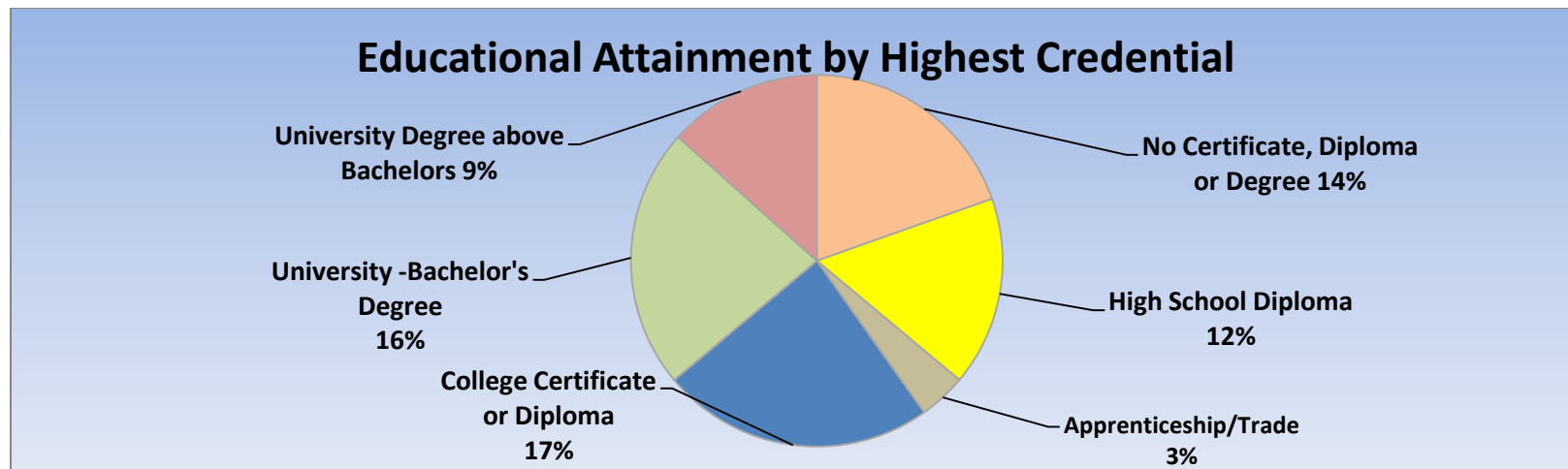
Marital Status	1996	2001	2006	2011	Change From Previous Period	As a % of Neighbourhood
Single	N.A.	N.A.	55	110	↑	16%
Married	N.A.	N.A.	90	330	↑	49%
Common-Law	N.A.	N.A.	0	45	↑	7%
Divorced	N.A.	N.A.	0	10	↑	1%
Separated	N.A.	N.A.	0	5	↑	1%
Widowed	N.A.	N.A.	10	15	↑	2%
Citizenship, Immigration & Ethnic Identity	1996	2001	2006	2011	Change From Previous Period	As a % of Neighbourhood
Citizenship						
Canadian Citizens	N.A.	N.A.	115	640	↑	96%
Non-Canadian Citizens	N.A.	N.A.	55	30	↓	4%
Immigration Status						
Canadian Born Population	N.A.	N.A.	110	500	↑	72%
Foreign Born Population	N.A.	N.A.	60	170	↑	25%
Visible Minority Population	N.A.	N.A.	0	145	↑	21%
Aboriginal Identity Population	N.A.	N.A.	0	0	–	0%

Family Composition	1996	2001	2006	2011	Change From Previous Period	As a % of Neighbourhood
Number of Census Families	N.A.	N.A.	50	195	↑	
Family Size - 2 Persons	N.A.	N.A.	15	70	↑	36%
Family Size - 3 Persons	N.A.	N.A.	15	30	↑	15%
Family Size - 4 Persons	N.A.	N.A.	10	60	↑	31%
Family Size - ≥ 5 Persons	N.A.	N.A.	10	35	↑	18%
Census Family - Average Size	2.67	2.33	3.20	3.30	↑	



Family Structure & Number of Children	1996	2001	2006	2011	Change From Previous Period
Married Couples	N.A.	N.A.	50	165	↑
Without Children	N.A.	N.A.	45	50	↑
With Children	N.A.	N.A.	5	110	↑
Common-Law	N.A.	N.A.	N.A.	20	↑
Without Children	N.A.	N.A.	N.A.	N.A.	
With Children	N.A.	N.A.	N.A.	N.A.	
Lone Parent Families	N.A.	N.A.	N.A.	10	↑
Female Headed	N.A.	N.A.	N.A.	N.A.	
1 Child	N.A.	N.A.	N.A.	N.A.	
2 Children	N.A.	N.A.	N.A.	N.A.	
≥ 3 Children	N.A.	N.A.	N.A.	N.A.	
Male Headed	N.A.	N.A.	N.A.	N.A.	
1 Child	N.A.	N.A.	N.A.	N.A.	
2 Children	N.A.	N.A.	N.A.	N.A.	
≥ 3 Children	N.A.	N.A.	N.A.	N.A.	

Educational Attainment by Credential	1996	2001	2006	2011	Change From Previous Period	As a % of Neighbourhood
No Certificate, Diploma or Degree	N.A.	N.A.	0	95	↑	14%
High School Diploma or Equivalent	N.A.	N.A.	65	80	↑	12%
Apprenticeship, or Trade Certificate	N.A.	N.A.	0	20	↑	3%
College Certificate or Diploma	N.A.	N.A.	50	115	↑	17%
University Certificate or Diploma	N.A.	N.A.	0	0	–	0%
University -Bachelor's Degree	N.A.	N.A.	0	110	↑	16%
University Degree above bachelor level (M.A. or PhD)	N.A.	N.A.	0	65	↑	9%



Housing by Structure Type & Tenure	1996	2001	2006	2011	Change From Previous Period	As a % of Neighbourhood
Total Occupied Dwellings	15	45	60	210	↑	
Single-Detached	N.A.	N.A.	60	210	↑	100%
Semi-Detached	N.A.	N.A.	N.A.	0		
Row House	N.A.	N.A.	N.A.	0		
Duplex	N.A.	N.A.	N.A.	0		
Apartment < 5 Storeys	N.A.	N.A.	N.A.	0		
Apartment ≥ 5 Storeys	N.A.	N.A.	N.A.	0		
Number of Owned Dwellings	N.A.	N.A.	N.A.	200	↑	
Owned as a % of Total	N.A.	N.A.	N.A.	100%		
Number of Rented Dwellings	N.A.	N.A.	N.A.	0		
Rented as a % of Total	N.A.	N.A.	N.A.	0%		
Average # of Rooms	N.A.	N.A.	N.A.	7.3		
Average # of Bedrooms	N.A.	N.A.	N.A.	N.A.		
Average Gross Rent	N.A.	N.A.	N.A.	N.A.		
Average Value of Dwelling	N.A.	N.A.	N.A.	\$381,052.00		

Labour Market Indicators	1996	2001	2006	2011	Change From Previous Period	As a % of Neighbourhood
Total Labour Force ≥ 15 years	N.A.	N.A.	135	350	↑	
Female	N.A.	N.A.	70	175	↑	50%
Male	N.A.	N.A.	65	175	↑	50%
Unemployment Rate	N.A.	N.A.	14%	N.A.		
Female	N.A.	N.A.	N.A.	N.A.		
Male	N.A.	N.A.	N.A.	N.A.		
Employment Rate	N.A.	N.A.	N.A.	N.A.		
Participation Rate	N.A.	N.A.	90%	69%	↓	
Female	N.A.	N.A.	78%	70%	↓	
Male	N.A.	N.A.	93%	70%	↓	
Labour Force by Sector						
Primary (Agriculture & Resources)	N.A.	N.A.	20	0	↓	0%
Secondary (Construction & Manufacturing)	N.A.	N.A.	15	50	↑	14%
Tertiary Services	N.A.	N.A.	105	295	↑	86%

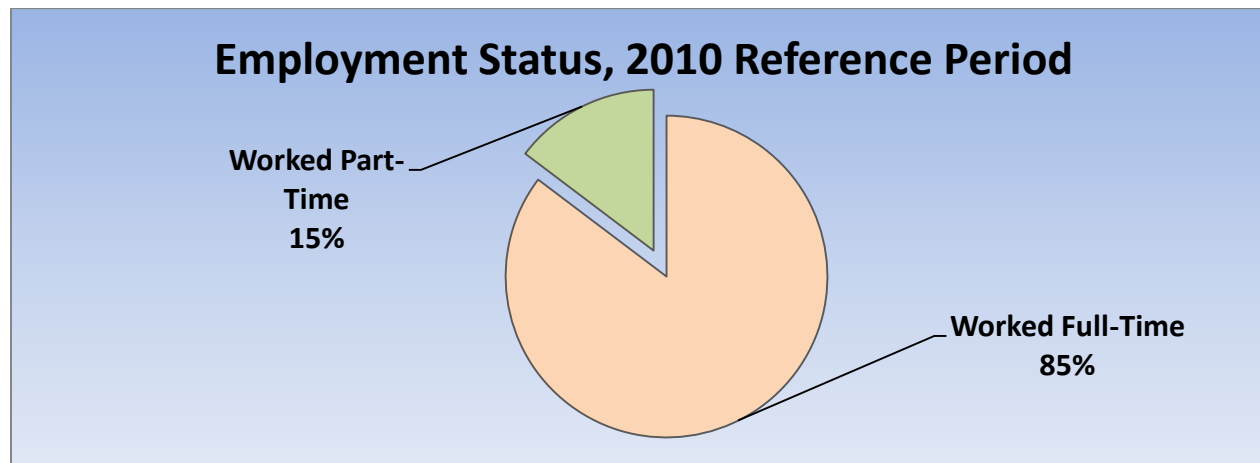
Income Characteristics of Economically Active Population	1996	2001	2006	2011	Change From Previous Period
Individual Income					
Average Income	N.A.	N.A.	N.A.	\$51,345.00	
Median Income	N.A.	N.A.	N.A.	\$44,920.00	
Income by Gender					
Average Income – Male	N.A.	N.A.	N.A.	\$65,897.00	
Average Income - Female	N.A.	N.A.	N.A.	\$36,197.00	
Median Income – Male	N.A.	N.A.	N.A.	\$57,922.00	
Median Income - Female	N.A.	N.A.	N.A.	\$35,917.00	
Household Income					
Average Household Income	N.A.	N.A.	N.A.	\$118,674.00	
Median Household Income	N.A.	N.A.	N.A.	\$119,307.00	
Family Income					
Average Family Income	N.A.	N.A.	N.A.	\$124,246.00	
Median Family Income	N.A.	N.A.	N.A.	\$121,493.00	
Lone-Parent Families					
Average Family Income	N.A.	N.A.	N.A.	N.A.	
Median Family Income	N.A.	N.A.	N.A.	N.A.	

Data Note: Income figures based on previous reporting year (1995, 2000, 2005 & 2010).

Labour Force by National Occupational Classification	1996	2001	2006	2011	Change From Previous Period	As a % of Labour Force
Management	N.A.	N.A.	N.A.	45		13%
Business, Finance and Administration	N.A.	N.A.	N.A.	50		14%
Natural and Applied Science Fields	N.A.	N.A.	N.A.	55		16%
Health Care	N.A.	N.A.	N.A.	25		7%
Education, Government, Social & Community Services	N.A.	N.A.	N.A.	55		16%
Art, Culture, recreation and Sport	N.A.	N.A.	N.A.	0		0%
Sales and Service Sector	N.A.	N.A.	N.A.	65		19%
Trades, Transport and Equipment Operators	N.A.	N.A.	N.A.	25		7%
Natural Resources and Agriculture	N.A.	N.A.	N.A.	0		0%
Manufacturing and Utilities	N.A.	N.A.	N.A.	25		7%

Class of Worker	1996	2001	2006	2011	Change From Previous Period	As a % Neighbourhood
Employee	N.A.	N.A.	130	340	↑	100%
Female	N.A.	N.A.	60	175		
Male	N.A.	N.A.	70	165		
Self-Employed	N.A.	N.A.	0	0		0%
Female	N.A.	N.A.	0	0		
Male	N.A.	N.A.	0	0		

Employment Status	1996	2001	2006	2011	Change From Previous Period	As a % of Active Labour Force
Worked Full-Time in 2010	N.A.	N.A.	N.A.	290	N.A.	85%
Worked Part-Time in 2010	N.A.	N.A.	N.A.	50	N.A.	15%



Mode of Transport to Work	1996	2001	2006	2011	Change From Previous Period	As a % of Neighbourhood
Automobile -As a Driver	N.A.	N.A.	95	285	↑	100%
Car-Pool	N.A.	N.A.	0	0	—	
Public Transportation	N.A.	N.A.	0	0	—	
Walked or Bicycled	N.A.	N.A.	0	0	—	
Other Modes	N.A.	N.A.	0	0	—	
Median Commuting Duration	N.A.	N.A.	N.A.	16 min.		

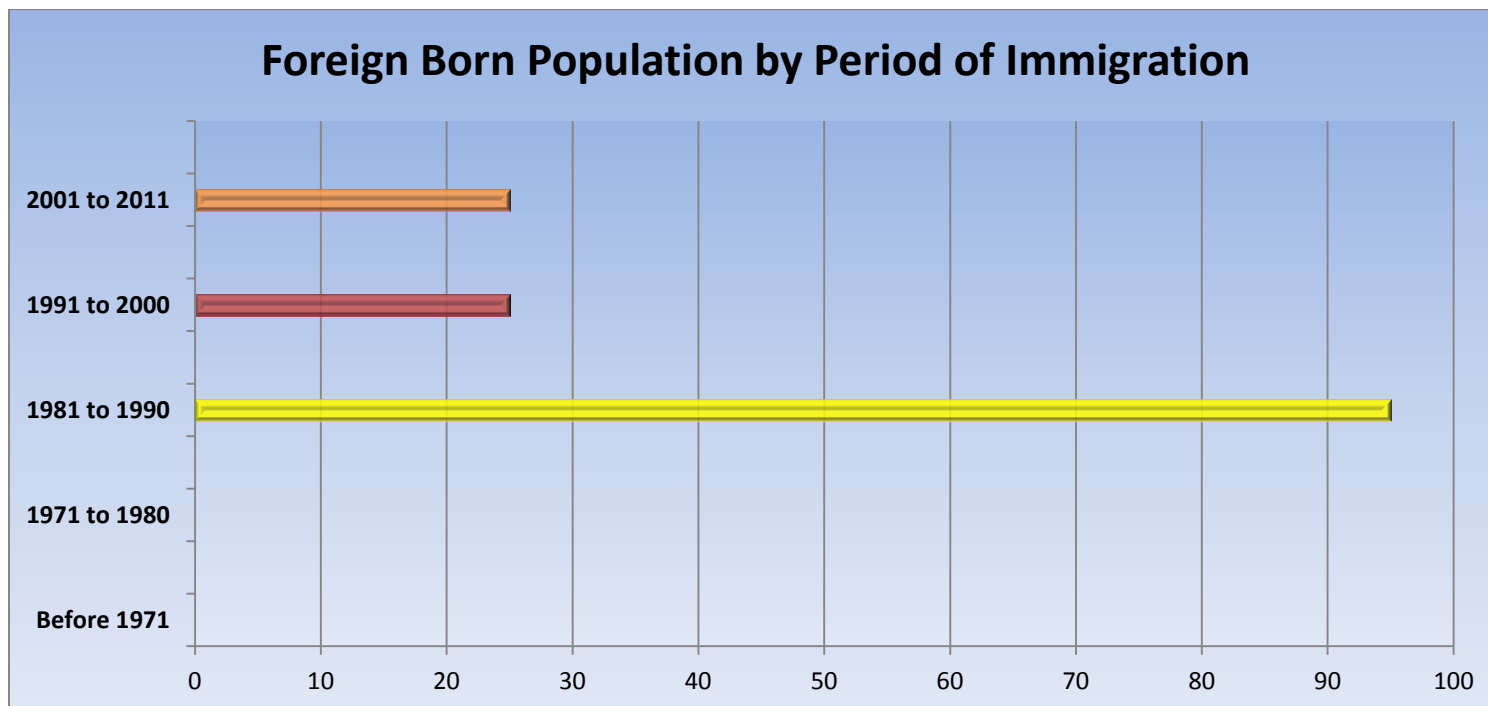
Place of Work	1996	2001	2006	2011	Change From Previous Period	As a % of Neighbourhood
Worked at Home	N.A.	N.A.	20	40	↑	12%
Worked at a Fixed Address	N.A.	N.A.	85	270	↑	79%
No Fixed Workplace Address	N.A.	N.A.	15	30	↑	9%
Worked within Municipality	N.A.	N.A.	80	N.A.		
Work in a different Municipality	N.A.	N.A.	0	N.A.		
Worked outside Canada	N.A.	N.A.	0	0	—	

Mobility/Migration Status	1996	2001	2006	2011	Change From Previous Period	As a % of Neighbourhood
Lived at the same address 5 years ago	N.A.	N.A.	90	70	↓	12%
Moved sometime with the last 5 years	N.A.	N.A.	70	525	↑	88%
Internal Migrants	N.A.	N.A.	65	55	↓	100%
- Intra-provincial	N.A.	N.A.	65	45	↓	
- Inter-provincial	N.A.	N.A.	0	10	↑	
External Migrants	N.A.	N.A.	0	0	↓	0%
Lived at the same address 1 years ago	N.A.	N.A.	170	470	↑	72%
Moved sometime with the last year	N.A.	N.A.	0	180	↑	28%
Internal Migrants	N.A.	N.A.	0	25	↑	100%
- Intra-provincial	N.A.	N.A.	0	0	—	
- Inter-provincial	N.A.	N.A.	0	0	—	
External Migrants	N.A.	N.A.	0	0	—	0%

Place of Birth	1996	2001	2006	2011	Change From Previous Period	As a % of Neighbourhood
Total Immigrant Population	N.A.	N.A.	N.A.	170		25%
Place of Birth by Continent						
North America (US only)	N.A.	N.A.	N.A.	0		0%
Africa	N.A.	N.A.	N.A.	10		1%
Asia	N.A.	N.A.	N.A.	65		9%
Caribbean	N.A.	N.A.	N.A.	0		0%
Central and South America	N.A.	N.A.	N.A.	0		0%
Europe	N.A.	N.A.	N.A.	75		11%
Recent Immigration by Continent, 2006-2011						
Recent Immigrants	N.A.	N.A.	N.A.	0		0%
North America (US only)	N.A.	N.A.	N.A.	0		
Africa	N.A.	N.A.	N.A.	0		
Asia	N.A.	N.A.	N.A.	0		
Caribbean	N.A.	N.A.	N.A.	0		
Central and South America	N.A.	N.A.	N.A.	0		
Europe	N.A.	N.A.	N.A.	0		

Immigration by Place of Birth	1996	2001	2006	2011	Change From Previous Period	As a % of Neighbourhood
1. N.A.	N.A.	N.A.	N.A.	N.A.		

Period of Immigration	1996	2001	2006	2011	Change From Previous Period	As a % of Neighbourhood
Before 1971	N.A.	N.A.	N.A.	0		0%
1971 to 1980	N.A.	N.A.	N.A.	0		0%
1981 to 1990	N.A.	N.A.	N.A.	95		66%
1991 to 2000	N.A.	N.A.	N.A.	25		17%
2001 to 2011	N.A.	N.A.	N.A.	25		17%



Language	1996	2001	2006	2011	Change From Previous Period	As a % of Neighbourhood
Knowledge of Official Languages						
English Only	N.A.	N.A.	160	630	↑	91%
French Only	N.A.	N.A.	N.A.	5	↑	1%
English and French	N.A.	N.A.	N.A.	50	↑	7%
Neither English or French	N.A.	N.A.	N.A.	15	↑	2%
Language Spoken Most Often at Home						
English	N.A.	N.A.	170	565	↑	82%
French	N.A.	N.A.	N.A.	5	↑	1%
Non-Official Language	N.A.	N.A.	N.A.	85	↑	12%
Mother Tongue *						
English	N.A.	N.A.	170	485	↑	70%
French	N.A.	N.A.	N.A.	10	↑	1%
Non-Official Language	N.A.	N.A.	N.A.	175	↑	25%

* Statistics Canada defines 'mother tongue' as the first language learned in childhood and still understood by the individual at the time of census reporting.

Non-Official Languages Spoken Top 10 Reported	1996	2001	2006	2011	Change From Previous Period	As a % of Neighbourhood
N.A.	N.A.	N.A.	N.A.	N.A.		

Religious Identification	1996	2001	2006	2011	Change From Previous Period	As a % of Neighbourhood
Buddhist	N.A.	N.A.	N.A.	0		0%
Christian	N.A.	N.A.	N.A.	435		63%
Anglican	N.A.	N.A.	N.A.	30		4%
Baptist	N.A.	N.A.	N.A.	0		0%
Catholic	N.A.	N.A.	N.A.	220		32%
Orthodox	N.A.	N.A.	N.A.	0		0%
Lutheran	N.A.	N.A.	N.A.	0		0%
Pentecostal	N.A.	N.A.	N.A.	55		8%
Presbyterian	N.A.	N.A.	N.A.	0		0%
United Church	N.A.	N.A.	N.A.	75		11%
Other Christian	N.A.	N.A.	N.A.	45		7%
Hindu	N.A.	N.A.	N.A.	0		0%
Jewish	N.A.	N.A.	N.A.	0		0%
Muslim	N.A.	N.A.	N.A.	20		3%
Sikh	N.A.	N.A.	N.A.	0		0%
Aboriginal Spirituality	N.A.	N.A.	N.A.	0		0%

Notes:

- (1) Source Data –Statistics Canada. 1996-2011 Census Data, Customized Profiles. Ottawa, Canada
- (2) Data also derived from Statistics Canada’s National Household Survey (NHS)
- (3) Customized Community and Neighbourhood Profiles tabulated and compiled by the City of London’s Planning Division –Policy Planning and Research Section.