



Jackson Neighbourhood Profile

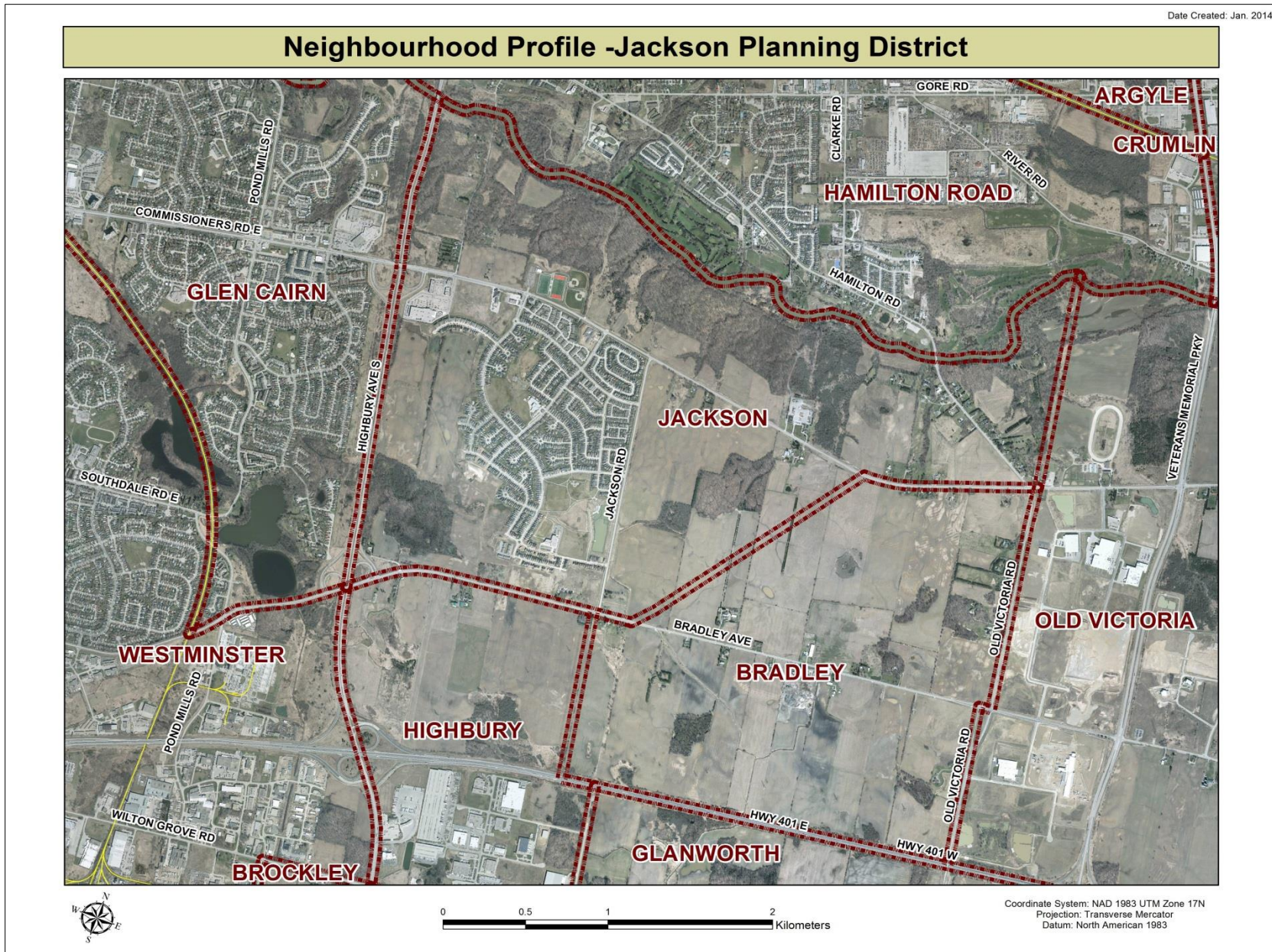
For further information contact:

John-Paul Sousa

Planning Research Analyst

Direct: (519) 661-2500 ext. 5989 | email: jpsousa@london.ca

Date Created: Jan. 2014

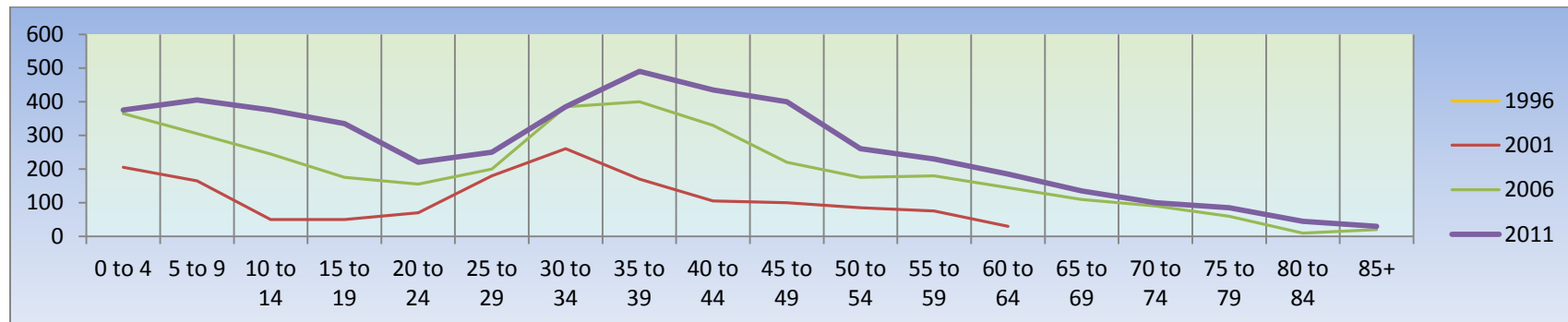


Population Characteristics & Age Distribution

| Jackson Neighbourhood | 1996 | 2001 | 2006 | 2011 | Change From Previous Period | |
|-------------------------|-----------|--------------|--------------|--------------|-----------------------------|------------|
| Total Population | 25 | 1,635 | 3,575 | 4,745 | ↑ | 33% |
| Female | N.A. | 805 | 1,805 | 2,325 | ↑ | 29% |
| Male | N.A. | 830 | 1,770 | 2,425 | ↑ | 37% |

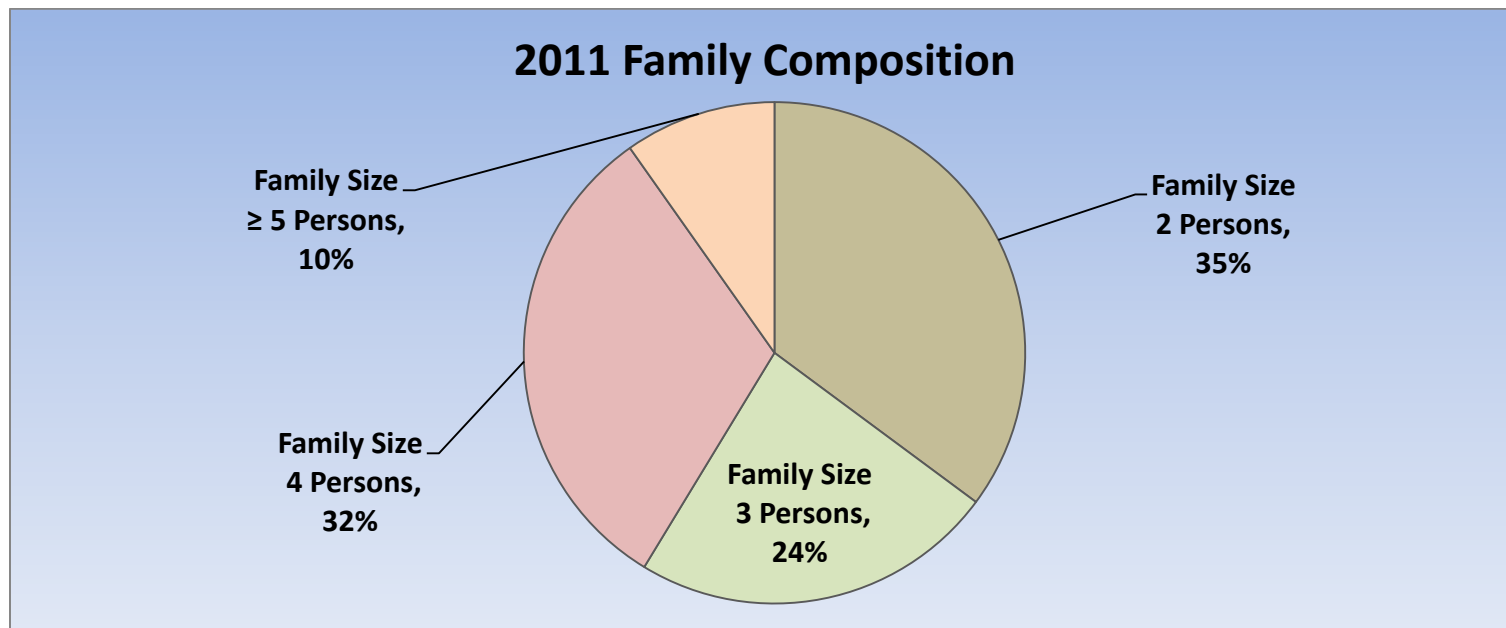
| Age Structure | 1996 | 2001 | 2006 | 2011 | Change From Previous Period | | As a % of Neighbourhood |
|-------------------|-------------|-------------|--------------|--------------|-----------------------------|------------|-------------------------|
| 0-19 | N.A. | 470 | 1,090 | 1,495 | ↑ | 37% | 32% |
| 0 to 4 | N.A. | 205 | 365 | 380 | ↑ | 4% | 8% |
| 5 to 9 | N.A. | 165 | 305 | 405 | ↑ | 33% | 9% |
| 10 to 14 | N.A. | 50 | 245 | 375 | ↑ | 53% | 8% |
| 15 to 19 | N.A. | 50 | 175 | 335 | ↑ | 91% | 7% |
| 20-44 | N.A. | 785 | 1,470 | 1,780 | ↑ | 21% | 38% |
| 45-64 | N.A. | 290 | 720 | 1,085 | ↑ | 51% | 23% |
| 65+ | N.A. | 90 | 290 | 405 | ↑ | 40% | 9% |
| Median Age | N.A. | N.A. | N.A. | 35.1 | | | |

| 2011 Census Age Cohort Breakout | Male | Female | Total | As a % of Neighbourhood |
|---------------------------------|--------------|--------------|--------------|-------------------------|
| 0 to 4 | 200 | 175 | 375 | 7.91% |
| 5 to 9 | 205 | 200 | 405 | 8.54% |
| 10 to 14 | 195 | 180 | 375 | 7.91% |
| 15 to 19 | 170 | 165 | 335 | 7.07% |
| 20 to 24 | 105 | 115 | 220 | 4.64% |
| 25 to 29 | 115 | 135 | 250 | 5.27% |
| 30 to 34 | 185 | 200 | 385 | 8.12% |
| 35 to 39 | 225 | 265 | 490 | 10.34% |
| 40 to 44 | 220 | 215 | 435 | 9.18% |
| 45 to 49 | 195 | 205 | 500 | 8.44% |
| 50 to 54 | 135 | 125 | 260 | 5.49% |
| 55 to 59 | 110 | 120 | 230 | 4.85% |
| 60 to 64 | 85 | 100 | 185 | 3.90% |
| 65 to 69 | 55 | 80 | 135 | 2.85% |
| 70 to 74 | 55 | 45 | 100 | 2.11% |
| 75 to 79 | 30 | 55 | 85 | 1.79% |
| 80 to 84 | 25 | 20 | 45 | 0.95% |
| 85+ | 15 | 15 | 30 | 0.63% |
| Total | 2,325 | 2,415 | 4,740 | |



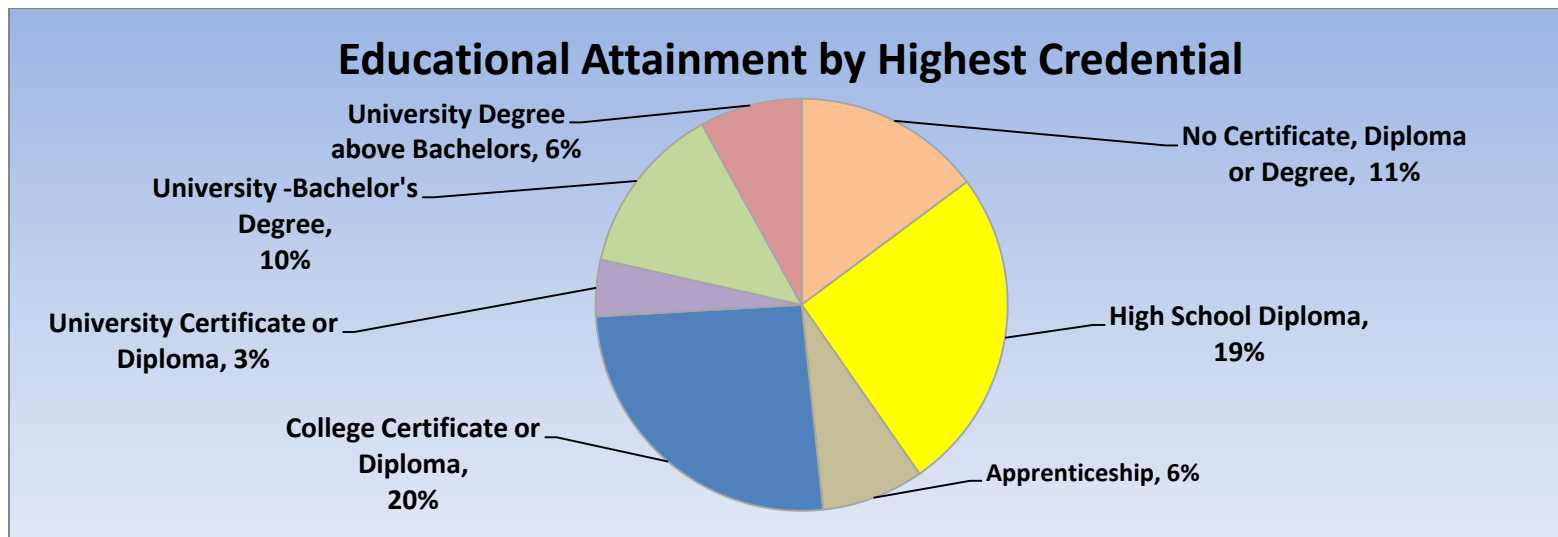
| Marital Status | 1996 | 2001 | 2006 | 2011 | Change From Previous Period | As a % of Neighbourhood |
|---|-------------|-------------|-------------|-------------|------------------------------------|--------------------------------|
| Single | N.A. | 245 | 545 | 775 | ↑ 42% | 775 |
| Married | N.A. | 855 | 1,845 | 2,300 | ↑ 25% | 48% |
| Common-Law | N.A. | 80 | 165 | 200 | ↑ 21% | 4% |
| Divorced | N.A. | 60 | 130 | 110 | ↓ (-15%) | 2% |
| Separated | N.A. | 30 | 55 | 90 | ↑ 64% | 2% |
| Widowed | N.A. | 25 | 85 | 110 | ↑ 29% | 2% |
| Citizenship, Immigration & Ethnic Identity | 1996 | 2001 | 2006 | 2011 | Change From Previous Period | As a % of Neighbourhood |
| Citizenship | | | | | | |
| Canadian Citizens | N.A. | 1,635 | 3,435 | 4,600 | ↑ 34% | 97% |
| Non-Canadian Citizens | N.A. | 0 | 140 | 205 | ↓ (-46%) | 4% |
| Immigration Status | | | | | | |
| Canadian Born Population | N.A. | 1,240 | 2,580 | 3,470 | ↑ 34% | 73% |
| Foreign Born Population | N.A. | 395 | 975 | 1,335 | ↑ 37% | 28% |
| Visible Minority Population | N.A. | 170 | 675 | 1,315 | ↑ 95% | 28% |
| Aboriginal Identity Population | N.A. | 0 | 85 | 105 | ↑ 24% | <1% |

| Family Composition | 1996 | 2001 | 2006 | 2011 | Change From Previous Period | As a % of Neighbourhood |
|-------------------------------------|-------------|-------------|--------------|--------------|-----------------------------|-------------------------|
| Number of Census Families | N.A. | 515 | 1,080 | 1,380 | ↑ 28% | |
| Family Size - 2 Persons | N.A. | 225 | 405 | 485 | ↑ 20% | 35% |
| Family Size - 3 Persons | N.A. | 125 | 265 | 325 | ↑ 23% | 24% |
| Family Size - 4 Persons | N.A. | 145 | 310 | 425 | ↑ 37% | 32% |
| Family Size - ≥ 5 Persons | N.A. | 20 | 100 | 135 | ↑ 35% | 10% |
| Census Family - Average Size | N.A. | 2.90 | 3.10 | 3.20 | | |



| Family Structure & Number of Children | 1996 | 2001 | 2006 | 2011 | Change From Previous Period | |
|---------------------------------------|-------------|------------|------------|--------------|-----------------------------|------------|
| Married Couples | N.A. | 420 | 910 | 1,350 | ↑ | 48% |
| Without Children | N.A. | 165 | 330 | 355 | ↑ | 8% |
| With Children | N.A. | 255 | 585 | 780 | ↑ | 33% |
| Common-Law | N.A. | 40 | 85 | 100 | ↑ | 18% |
| Without Children | N.A. | 15 | 35 | 60 | ↑ | 71% |
| With Children | N.A. | 25 | 45 | 45 | – | – |
| Lone Parent Families | N.A. | 55 | 85 | 145 | ↑ | 71% |
| Female Headed | N.A. | 30 | 70 | 115 | ↑ | 64% |
| 1 Child | N.A. | 15 | 40 | 55 | ↑ | 38% |
| 2 Children | N.A. | 10 | 15 | 50 | ↑ | 233% |
| ≥ 3 Children | N.A. | 10 | 15 | 15 | – | – |
| Male Headed | N.A. | 25 | 15 | 20 | ↑ | 33% |
| 1 Child | N.A. | 20 | 10 | 20 | ↑ | 100% |
| 2 Children | N.A. | N.A. | N.A. | N.A. | – | – |
| ≥ 3 Children | N.A. | N.A. | N.A. | N.A. | – | – |

| Educational Attainment by Credential | 1996 | 2001 | 2006 | 2011 | Change From Previous Period | As a % of Neighbourhood |
|--|------|------|------|------|-----------------------------|-------------------------|
| No Certificate, Diploma or Degree | N.A. | N.A. | N.A. | 535 | | 11% |
| High School Diploma or Equivalent | N.A. | N.A. | N.A. | 920 | | 19% |
| Apprenticeship, or Trade Certificate | N.A. | 95 | N.A. | 290 | | 6% |
| College Certificate or Diploma | N.A. | N.A. | N.A. | 930 | | 20% |
| University Certificate or Diploma | N.A. | N.A. | N.A. | 160 | | 3% |
| University -Bachelor's Degree | N.A. | N.A. | N.A. | 485 | | 10% |
| University Degree above bachelor level (M.A. or PhD) | N.A. | N.A. | N.A. | 290 | | 6% |

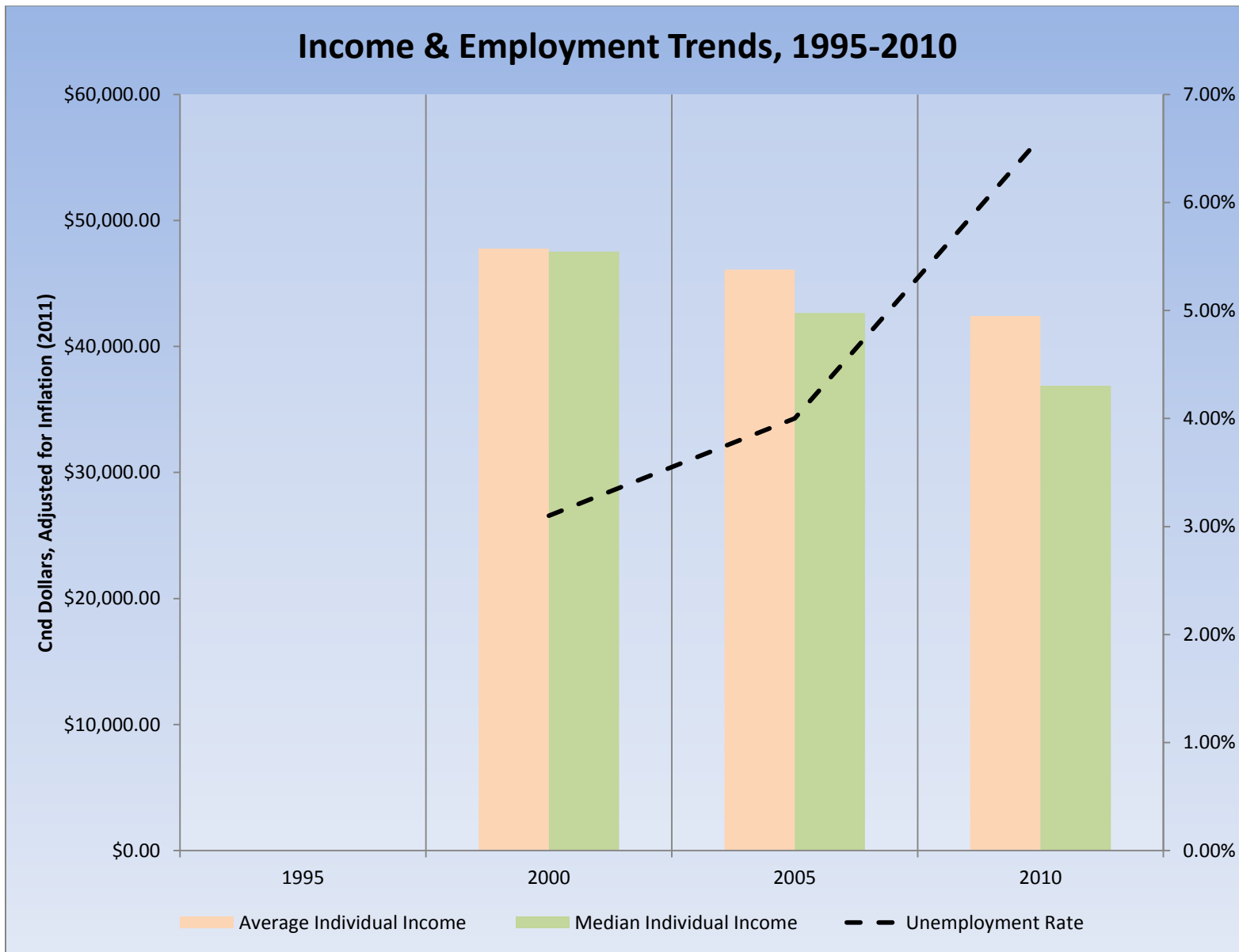


| Housing by Structure Type & Tenure | 1996 | 2001 | 2006 | 2011 | Change From Previous Period | As a % of Neighbourhood |
|------------------------------------|-------------|--------------|--------------|--------------|-----------------------------|-------------------------|
| Total Occupied Dwellings | N.A. | 590 | 1,205 | 1,590 | 32% | |
| Single-Detached | N.A. | 515 | 1,070 | 1,335 | 25% | 84% |
| Semi-Detached | N.A. | 25 | 40 | 30 | (-25%) | 2% |
| Row House | N.A. | 50 | 95 | 220 | 132% | 14% |
| Duplex | N.A. | 0 | 0 | 0 | — — | 0% |
| Apartment < 5 Storeys | N.A. | 0 | 0 | 0 | — — | 0% |
| Apartment ≥ 5 Storeys | N.A. | 0 | 0 | 5 | 100% | <1% |
| Number of Owned Dwellings | N.A. | 575 | 1,175 | 1,560 | 33% | |
| Owned as a % of Total | N.A. | 97% | 99% | 98% | | |
| Number of Rented Dwellings | N.A. | 20 | 15 | 25 | | |
| Rented as a % of Total | N.A. | 3% | 1% | 2% | | |
| Average # of Rooms | N.A. | 6.6 | 7.4 | 7.2 | | |
| Average # of Bedrooms | N.A. | 2.8 | 3.00 | N.A. | — — | |
| Average Gross Rent | N.A. | \$794.00 | \$668.00 | \$832.00 | 25% | |
| Average Value of Dwelling | N.A. | \$161,645.00 | \$228,294.00 | \$271,960.00 | 19% | |

| Labour Market Indicators | 1996 | 2001 | 2006 | 2011 | Change From Previous Period | | As a % of Neighbourhood |
|--|-------------|--------------|--------------|--------------|-----------------------------|------------|-------------------------|
| Total Labour Force ≥ 15 years | N.A. | 925 | 1,875 | 2,585 | ↑ | 38% | |
| Female | N.A. | 435 | 960 | 1,240 | ↑ | 29% | 48% |
| Male | N.A. | 490 | 915 | 1,345 | ↑ | 47% | 52% |
| Unemployment Rate | N.A. | 3.10% | 4.00% | 6.60% | ↑ | | |
| Female | N.A. | 2.30% | 5.90% | 4.40% | ↓ | | |
| Male | N.A. | 3.10% | 2.10% | 8.20% | ↑ | | |
| Employment Rate | N.A. | N.A. | N.A. | 67.00% | – | | |
| Participation Rate | N.A. | 80% | 74% | 71.70% | ↓ | | |
| Female | N.A. | 73% | 73% | 67.80% | ↓ | | |
| Male | N.A. | 80% | 74% | 75.80% | | | |
| Labour Force by Sector | | | | | | | |
| Primary (Agriculture & Resources) | N.A. | 0 | 0 | 40 | ↑ | 100% | 2% |
| Secondary (Construction & Manufacturing) | N.A. | 245 | 165 | 580 | ↑ | 252% | 23% |
| Tertiary Services | N.A. | 640 | 865 | 1,925 | ↑ | 123% | 76% |

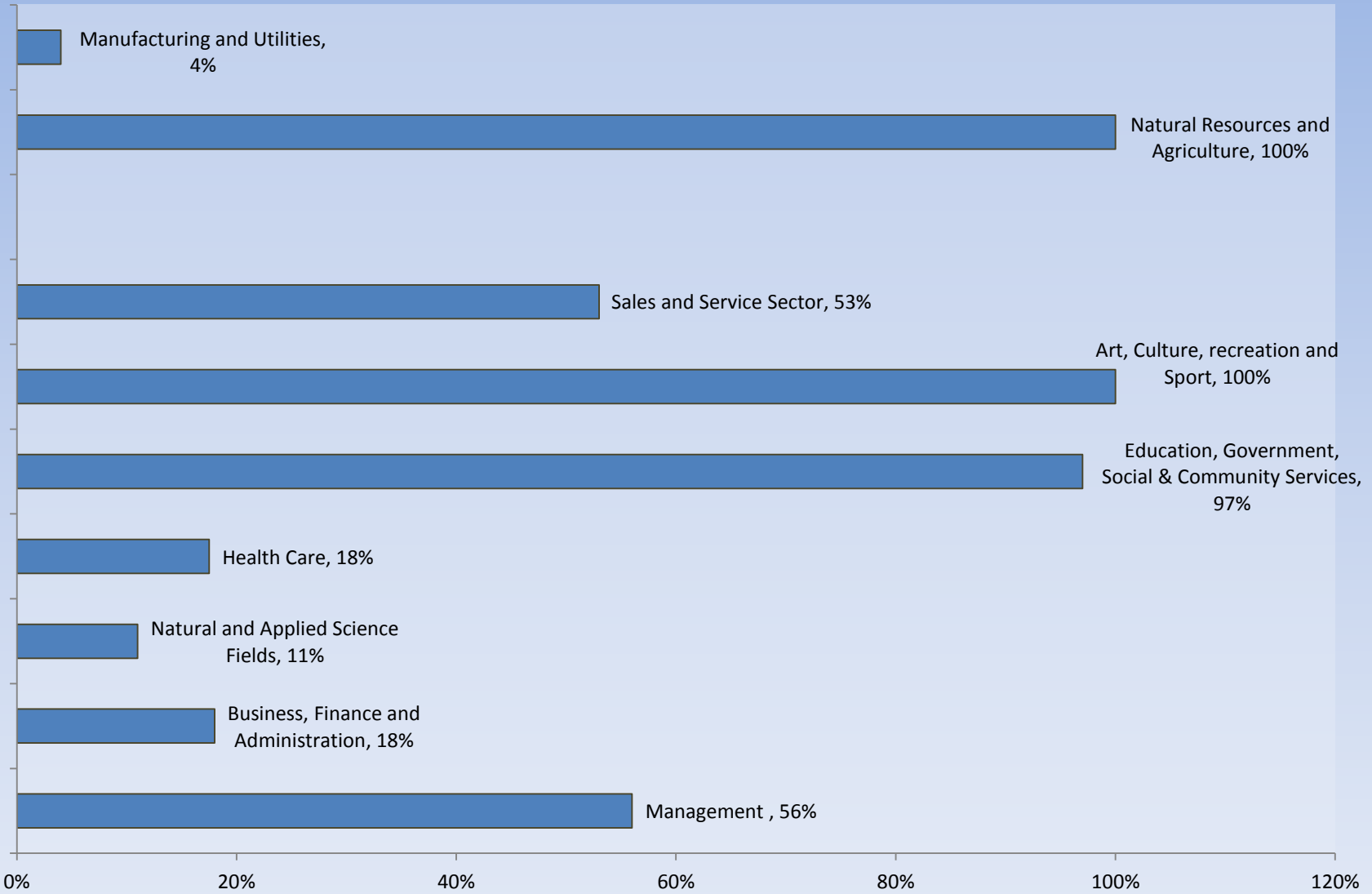
| Income Characteristics of Economically Active Population | 1996 | 2001 | 2006 | 2011 | Change From Previous Period | |
|--|------|-------------|-------------|-------------|-----------------------------|-------|
| Individual Income | | | | | | |
| Average Income | N.A. | \$34,988.00 | \$41,141.00 | \$41,290.00 | ↑ | <1% |
| Median Income | N.A. | \$34,808.00 | \$38,064.00 | \$35,902.00 | ↓ | (-6%) |
| Income by Gender | | | | | | |
| Average Income – Male | N.A. | \$41,606.00 | \$50,448.00 | \$47,825.00 | ↓ | (-5%) |
| Average Income - Female | N.A. | \$28,370.00 | \$32,903.00 | \$35,040.00 | ↑ | 6% |
| Median Income - Male | N.A. | \$41,131.00 | \$49,466.00 | \$46,656.00 | ↓ | (-6%) |
| Median Income - Female | N.A. | \$28,485.00 | \$30,954.00 | \$30,275.00 | ↓ | (-2%) |
| Household Income | | | | | | |
| Average Household Income | N.A. | \$70,920.00 | \$87,031.00 | \$88,473.00 | ↑ | 2% |
| Median Household Income | N.A. | \$72,618.00 | \$80,864.00 | \$88,591.00 | ↑ | 10% |
| Family Income | | | | | | |
| Average Family Income | N.A. | \$71,057.00 | \$90,378.00 | \$93,752.00 | ↑ | 4% |
| Median Family Income | N.A. | \$74,378.00 | \$88,859.00 | \$91,051.00 | ↑ | 2% |
| Lone-Parent Families | | | | | | |
| Average Family Income | N.A. | N.A. | N.A. | \$57,152.00 | | |
| Median Family Income | N.A. | N.A. | N.A. | \$55,210.00 | | |

Data Note: Income figures based on previous reporting year (1995, 2000, 2005 & 2010).



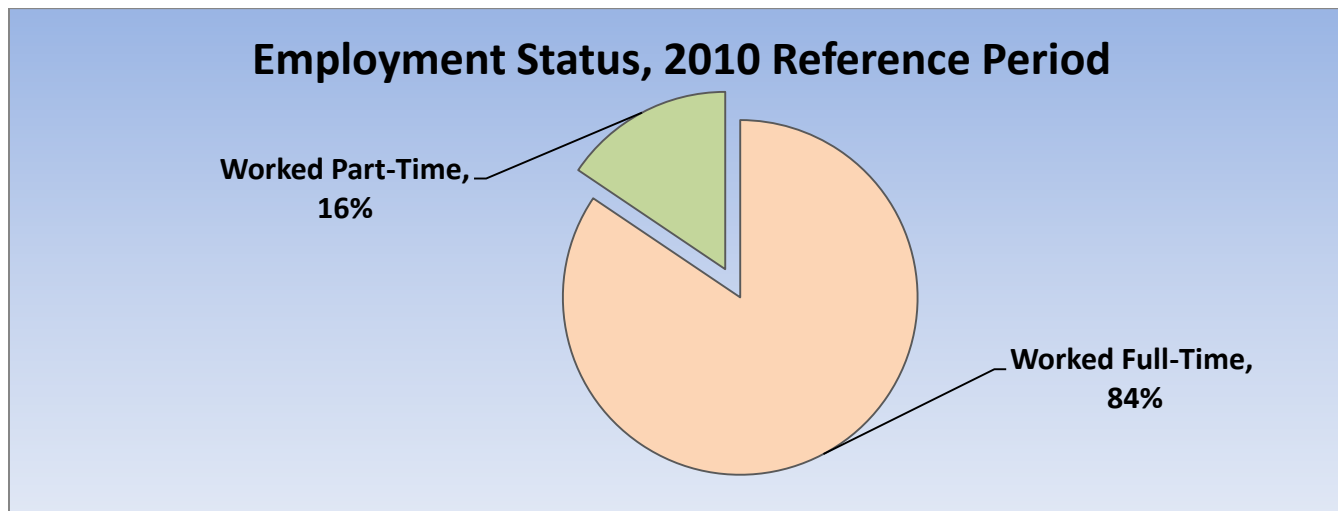
| Labour Force by National Occupational Classification | 1996 | 2001 | 2006 | 2011 | Change From Previous Period | | As a % of Labour Force |
|--|------|------|------|------|-----------------------------|-------|------------------------|
| Management | N.A. | 100 | 135 | 210 | ↑ | 56% | 8% |
| Business, Finance and Administration | N.A. | 190 | 370 | 435 | ↑ | 18% | 17% |
| Natural and Applied Science Fields | N.A. | 100 | 140 | 155 | ↑ | 11% | 6% |
| Health Care | N.A. | 110 | 200 | 235 | ↑ | 17.5% | 9% |
| Education, Government, Social & Community Services | N.A. | 50 | 165 | 325 | ↑ | 97% | 13% |
| Art, Culture, recreation and Sport | N.A. | 0 | 0 | 30 | ↑ | 100% | 1% |
| Sales and Service Sector | N.A. | 170 | 350 | 535 | ↑ | 53% | 21% |
| Trades, Transport and Equipment Operators | N.A. | 115 | 340 | 340 | — | — | 13% |
| Natural Resources and Agriculture | N.A. | 10 | 0 | 40 | ↑ | 100% | 2% |
| Manufacturing and Utilities | N.A. | 75 | 230 | 240 | ↑ | 4% | 9% |

Employment Trends by Occupational Breakout, 2006-2011



| Class of Worker | 1996 | 2001 | 2006 | 2011 | Change From Previous Period | As a % Neighbourhood |
|----------------------|-------------|------------|--------------|--------------|-----------------------------|----------------------|
| Employee | N.A. | 835 | 1,805 | 2,355 | ↓ (-30%) | 92% |
| Female | N.A. | 405 | 945 | 1,180 | | |
| Male | N.A. | 430 | 860 | 1,175 | | |
| Self-Employed | N.A. | 75 | 115 | 195 | ↑ 70% | 6% |
| Female | N.A. | 15 | 70 | 60 | | |
| Male | N.A. | 60 | 45 | 135 | | |

| Employment Status | 1996 | 2001 | 2006 | 2011 | Change From Previous Period | As a % of Active Labour Force |
|--------------------------|------|------|------|-------|-----------------------------|-------------------------------|
| Worked Full-Time in 2010 | N.A. | N.A. | N.A. | 2,035 | N.A. | 84% |
| Worked Part-Time in 2010 | N.A. | N.A. | N.A. | 375 | N.A. | 16% |



| Mode of Transport to Work | 1996 | 2001 | 2006 | 2011 | Change From Previous Period | As a % of Neighbourhood |
|----------------------------------|-------------|-------------|-------------|----------------|-----------------------------|-------------------------|
| Automobile -As a Driver | N.A. | 785 | 1,625 | 2,040 | ↑ 26% | 87% |
| Car-Pool | N.A. | 30 | 135 | 190 | ↑ 41% | 8% |
| Public Transportation | N.A. | 15 | 25 | 75 | ↑ 200% | 3% |
| Walked or Bicycled | N.A. | 10 | 0 | 40 | ↑ 100% | 2% |
| Other Modes | N.A. | 0 | 0 | 10 | ↑ 100% | <1% |
| Median Commuting Duration | N.A. | N.A. | N.A. | 15.7min | | |

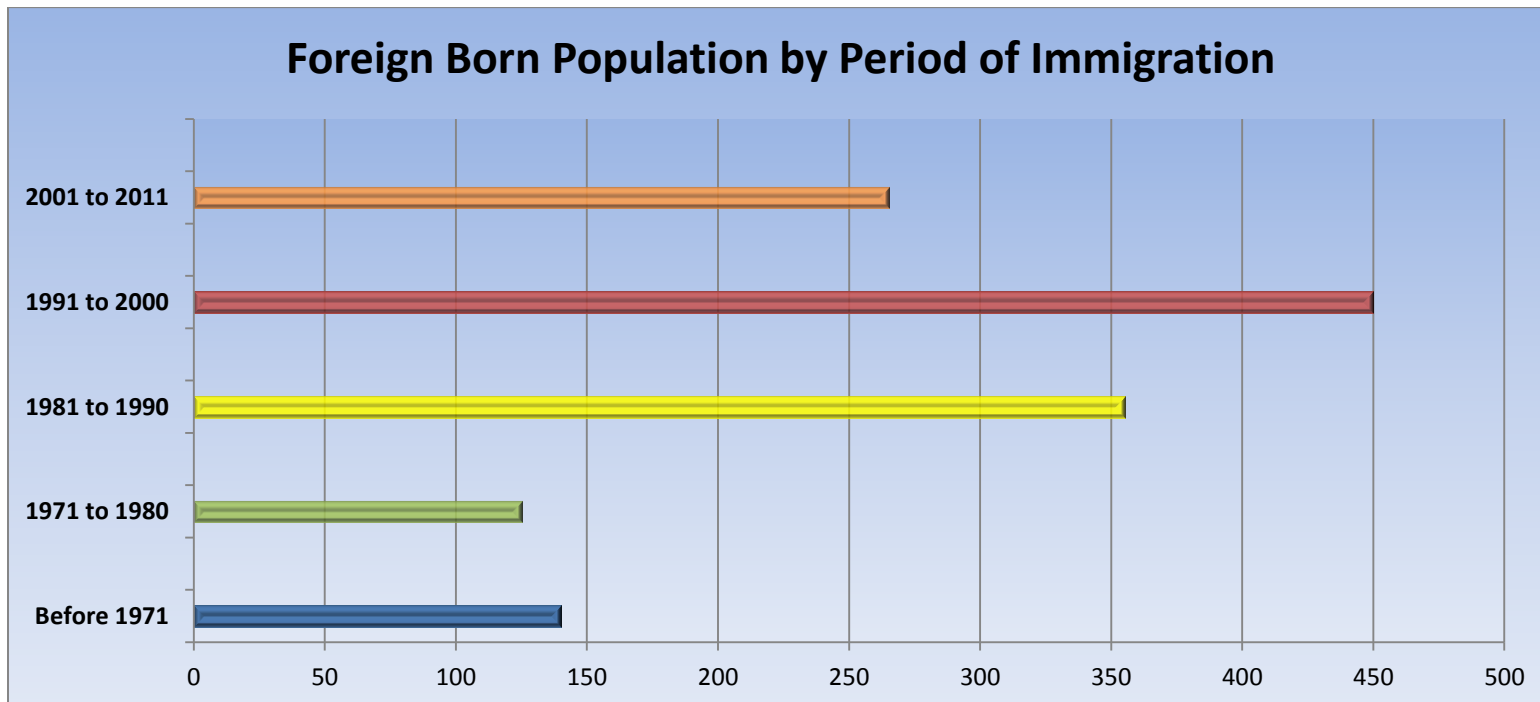
| Place of Work | 1996 | 2001 | 2006 | 2011 | Change From Previous Period | As a % of Neighbourhood |
|----------------------------------|------|------|-------|-------|-----------------------------|-------------------------|
| Worked at Home | N.A. | 60 | 80 | 45 | ↓ 44% | 2% |
| Worked at a Fixed Address | N.A. | 730 | 1,635 | 2,130 | ↑ 30% | 89% |
| No Fixed Workplace Address | N.A. | 115 | 160 | 230 | ↑ 44% | 10% |
| Worked within Municipality | N.A. | 570 | 1,505 | N.A. | — — | |
| Work in a different Municipality | N.A. | 135 | 365 | N.A. | — — | |
| Worked outside Canada | N.A. | 10 | 0 | 0 | — — | |

| Mobility/Migration Status | 1996 | 2001 | 2006 | 2011 | Change From Previous Period | As a % of Neighbourhood |
|---|-------------|--------------|--------------|--------------|-----------------------------|-------------------------|
| Lived at the same address 5 years ago | N.A. | 155 | 1,140 | 2,495 | ↑ | 57% |
| Moved sometime with the last 5 years | N.A. | 1,270 | 2,070 | 1,920 | ↓ (-7%) | 43% |
| Internal Migrants | N.A. | 305 | 345 | 420 | ↑ 22% | 90% |
| - Intra-provincial | N.A. | 285 | 305 | 380 | ↑ | |
| - Inter-provincial | N.A. | 20 | 40 | 50 | ↑ | |
| External Migrants | N.A. | 0 | 70 | 45 | ↓ (-36%) | 10% |
| Lived at the same address 1 years ago | N.A. | 1,285 | 3,005 | 4,345 | ↑ 45% | 91% |
| Moved sometime with the last year | N.A. | 300 | 475 | 415 | ↓ -13% | 9% |
| Internal Migrants | N.A. | 65 | 45 | 110 | ↑ 144% | 100% |
| - Intra-provincial | N.A. | 60 | 50 | 100 | ↑ 100% | |
| - Inter-provincial | N.A. | 10 | 0 | 0 | - - | |
| External Migrants | N.A. | 0 | 10 | 0 | ↓ (-100%) | 0% |

| Place of Birth | 1996 | 2001 | 2006 | 2011 | Change From Previous Period | | As a % of Neighbourhood |
|---|-------------|-------------|------------|--------------|-----------------------------|---------------|-------------------------|
| Total Immigrant Population | N.A. | N.A. | 975 | 1,335 | ↑ | 37% | 28% |
| Place of Birth by Continent | | | | | | | |
| North America (US only) | N.A. | N.A. | 30 | 20 | ↓ | (-33%) | <1% |
| Africa | N.A. | N.A. | 115 | 105 | ↓ | (-9%) | 2% |
| Asia | N.A. | N.A. | 220 | 450 | ↑ | 105% | 9% |
| Caribbean | N.A. | N.A. | 45 | 80 | ↑ | 78% | 2% |
| Central and South America | N.A. | N.A. | 60 | 170 | ↑ | 183% | 4% |
| Europe | N.A. | N.A. | 540 | 485 | ↓ | (-10%) | 10% |
| Recent Immigration by Continent, 2006-2011 | | | | | | | |
| Recent Immigrants | N.A. | N.A. | 85 | 75 | ↓ | (-12%) | 2% |
| North America (US only) | N.A. | N.A. | 0 | N.A. | | | |
| Africa | N.A. | N.A. | 20 | N.A. | | | |
| Asia | N.A. | N.A. | 45 | N.A. | | | |
| Caribbean | N.A. | N.A. | 0 | N.A. | | | |
| Central and South America | N.A. | N.A. | 0 | N.A. | | | |
| Europe | N.A. | N.A. | 10 | N.A. | | | |

| Immigration by Place of Birth | 1996 | 2001 | 2006 | 2011 | Change From Previous Period | As a % of Neighbourhood |
|--------------------------------------|-------------|-------------|-------------|-------------|------------------------------------|--------------------------------|
| 1. Poland | N.A. | N.A. | N.A. | 205 | | 4% |
| 2. Pakistan | N.A. | N.A. | N.A. | 90 | | 2% |
| 3. Colombia | N.A. | N.A. | N.A. | 85 | | 2% |
| 4. Portugal | N.A. | N.A. | N.A. | 80 | | 2% |
| 5. El Salvador | N.A. | N.A. | N.A. | 65 | | 1% |
| 6. United Kingdom | N.A. | N.A. | N.A. | 65 | | 1% |
| 7. Trinidad & Tobago | N.A. | N.A. | N.A. | 55 | | 1% |
| N.A. | | | | | | |

| Period of Immigration | 1996 | 2001 | 2006 | 2011 | Change From Previous Period | As a % of Neighbourhood |
|-----------------------|------|------|------|------|-----------------------------|-------------------------|
| Before 1971 | N.A. | N.A. | 200 | 140 | ↓ (-30%) | 3% |
| 1971 to 1980 | N.A. | N.A. | 120 | 125 | ↑ 4% | 3% |
| 1981 to 1990 | N.A. | N.A. | 80 | 355 | ↑ 344% | 7% |
| 1991 to 2000 | N.A. | N.A. | 55 | 450 | ↑ 536% | 9% |
| 2001 to 2011 | N.A. | N.A. | 55 | 265 | ↑ 382% | 6% |



| Language | 1996 | 2001 | 2006 | 2011 | Change From Previous Period | As a % of Neighbourhood |
|---|------|-------|-------|-------|-----------------------------|-------------------------|
| Knowledge of Official Languages | | | | | | |
| English Only | N.A. | 1,495 | 3,310 | 4,280 | ↑ 29% | 90% |
| French Only | N.A. | 0 | 0 | 10 | ↑ 100% | <1% |
| English and French | N.A. | 100 | 210 | 370 | ↑ 76% | 8% |
| Neither English or French | N.A. | 40 | 55 | 85 | ↑ 55% | 2% |
| Language Spoken Most Often at Home | | | | | | |
| English | N.A. | 1,260 | 2,510 | 3,775 | ↑ 50% | 80% |
| French | N.A. | 40 | 25 | 20 | ↓ (-20%) | <1% |
| Non-Official Language | N.A. | 430 | 940 | 660 | ↓ (-30%) | 14% |
| Mother Tongue * | | | | | | |
| English | N.A. | 1,170 | 2,510 | 3,210 | ↑ 28% | 68% |
| French | N.A. | 40 | 25 | 70 | ↑ 180% | 1% |
| Non-Official Language | N.A. | 430 | 940 | 1,330 | ↑ 41% | 28% |

* Statistics Canada defines 'mother tongue' as the first language learned in childhood and still understood by the individual at the time of census reporting.

| Non-Official Languages Spoken Top 10 Reported | 1996 | 2001 | 2006 | 2011 | Change From Previous Period | As a % of Neighbourhood |
|--|-------------|-------------|-------------|-------------|------------------------------------|--------------------------------|
| 1. Polish | N.A. | N.A. | N.A. | 260 | | 5% |
| 2. Spanish | N.A. | N.A. | N.A. | 255 | | 5% |
| 3. Portuguese | N.A. | N.A. | N.A. | 125 | | 3% |
| 4. Panjabi | N.A. | N.A. | N.A. | 115 | | 2% |
| 5. Chinese* | N.A. | N.A. | N.A. | 110 | | 2% |
| 6. Arabic | N.A. | N.A. | N.A. | 100 | | 2% |
| 7. Tagalog | N.A. | N.A. | N.A. | 85 | | 2% |
| 8. Italian | N.A. | N.A. | N.A. | 65 | | 1% |
| 9. Vietnamese | N.A. | N.A. | N.A. | 65 | | 1% |
| 10. Urdu | N.A. | N.A. | N.A. | 50 | | 1% |

* Refers to Cantonese and Mandarin language speakers as well as others who do not specify otherwise.

| Religious Identification | 1996 | 2001 | 2006 | 2011 | Change From Previous Period | As a % of Neighbourhood |
|--------------------------|------|------|------|-------|-----------------------------|-------------------------|
| Buddhist | N.A. | N.A. | N.A. | 80 | | 2% |
| Christian | N.A. | N.A. | N.A. | 3,490 | | 74% |
| Anglican | N.A. | N.A. | N.A. | 195 | | 4% |
| Baptist | N.A. | N.A. | N.A. | 120 | | 3% |
| Catholic | N.A. | N.A. | N.A. | 2,020 | | 43% |
| Orthodox | N.A. | N.A. | N.A. | 80 | | 2% |
| Lutheran | N.A. | N.A. | N.A. | 35 | | 1% |
| Pentecostal | N.A. | N.A. | N.A. | 75 | | 2% |
| Presbyterian | N.A. | N.A. | N.A. | 170 | | 4% |
| United Church | N.A. | N.A. | N.A. | 305 | | 6% |
| Other Christian | N.A. | N.A. | N.A. | 500 | | 11% |
| Hindu | N.A. | N.A. | N.A. | 50 | | 1% |
| Jewish | N.A. | N.A. | N.A. | 0 | | 0% |
| Muslim | N.A. | N.A. | N.A. | 310 | | 7% |
| Sikh | N.A. | N.A. | N.A. | 45 | | 1% |
| Aboriginal Spirituality | N.A. | N.A. | N.A. | 0 | | 0% |

Notes:

- (1) Source Data –Statistics Canada. 1996-2011 Census Data, Customized Profiles. Ottawa, Canada
- (2) Data also derived from Statistics Canada’s National Household Survey (NHS)
- (3) Customized Community and Neighbourhood Profiles tabulated and compiled by the City of London’s Planning Division –Policy Planning and Research Section.